



**Parks**

# **VERDI SQUARE ACCESSIBLE PATH & WATER SERVICE INSTALLATION**

LPC Presentation

Designer: Cameron Engineering an IMEG Company

Date: 02/11/2025

Total Budget: 873K, Mayoral

# Goals

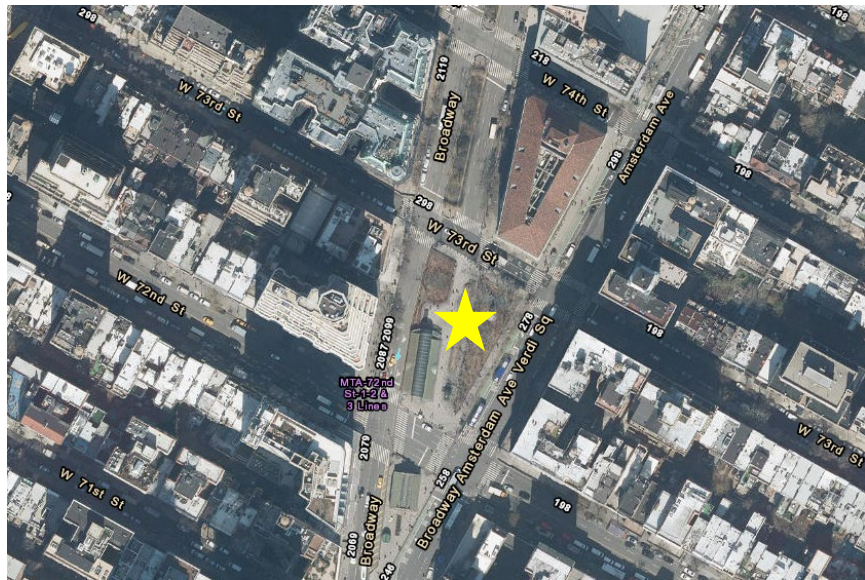
- Install an asphalt path at to provide an accessible route within the square.
- Provide water service and cross-connection controls.
- Install an RPZ (Reduced Pressure Zone) backflow device and a water meter in a vandal proof enclosure.
- Install two quick couplers at Verdi Square.







New York City NTS



Neighborhood of Upper West Side NTS



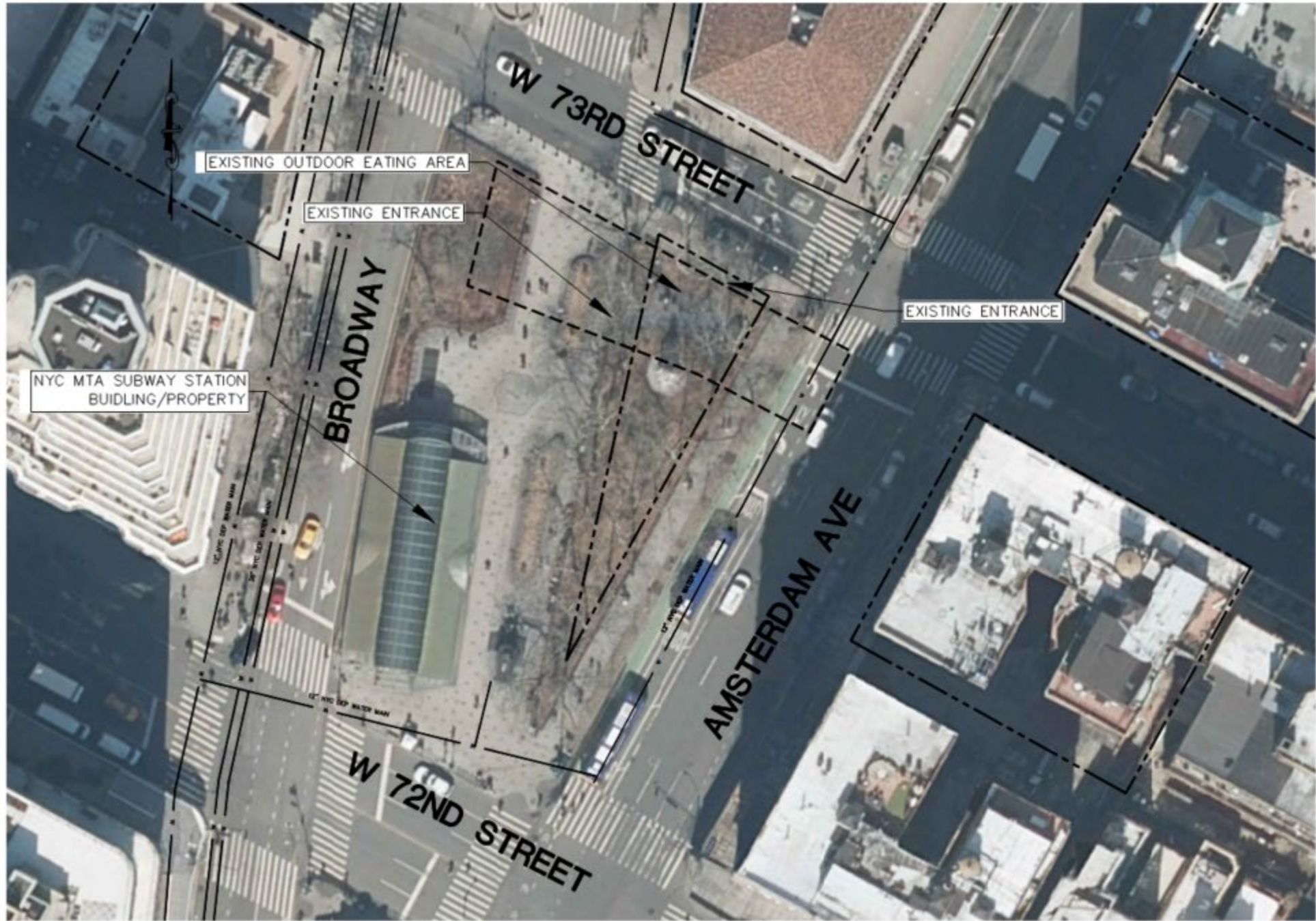
Site: Verdi Square NTS



NYC Parks

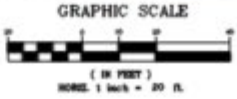
# MG-123M Installation of Water Service Verdi Square | Project Location





**LEGEND**

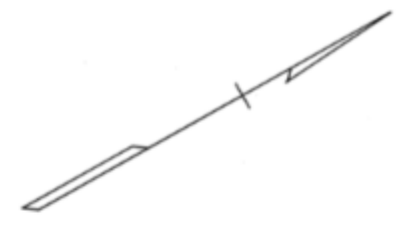
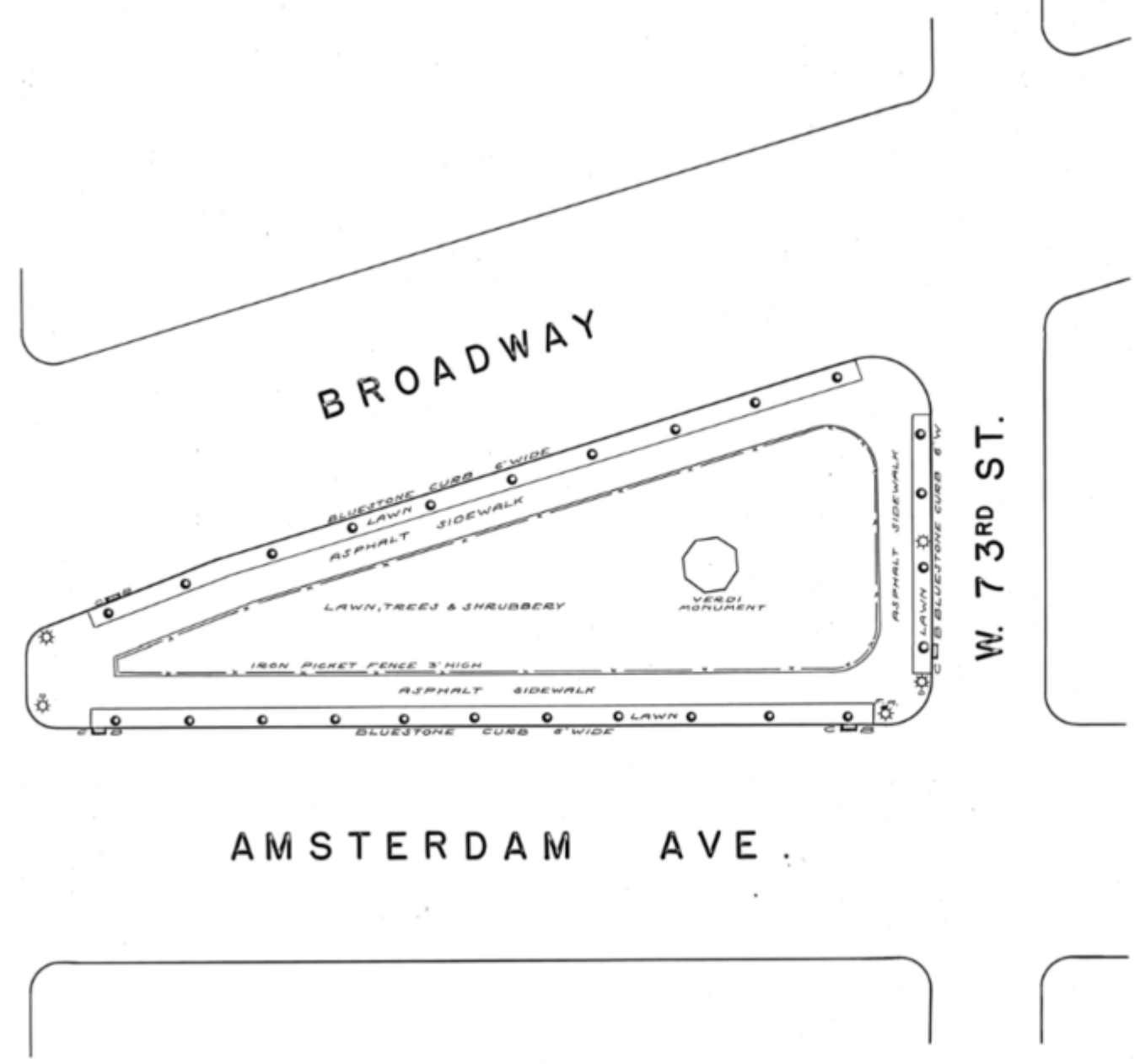
EXISTING WATER MAIN	---
CONTRACT LIMIT LINE	----



**MG-123M Installation of Water Service**  
**Verdi Square | Existing Conditions**



W. 72ND ST.



August 8, 1935

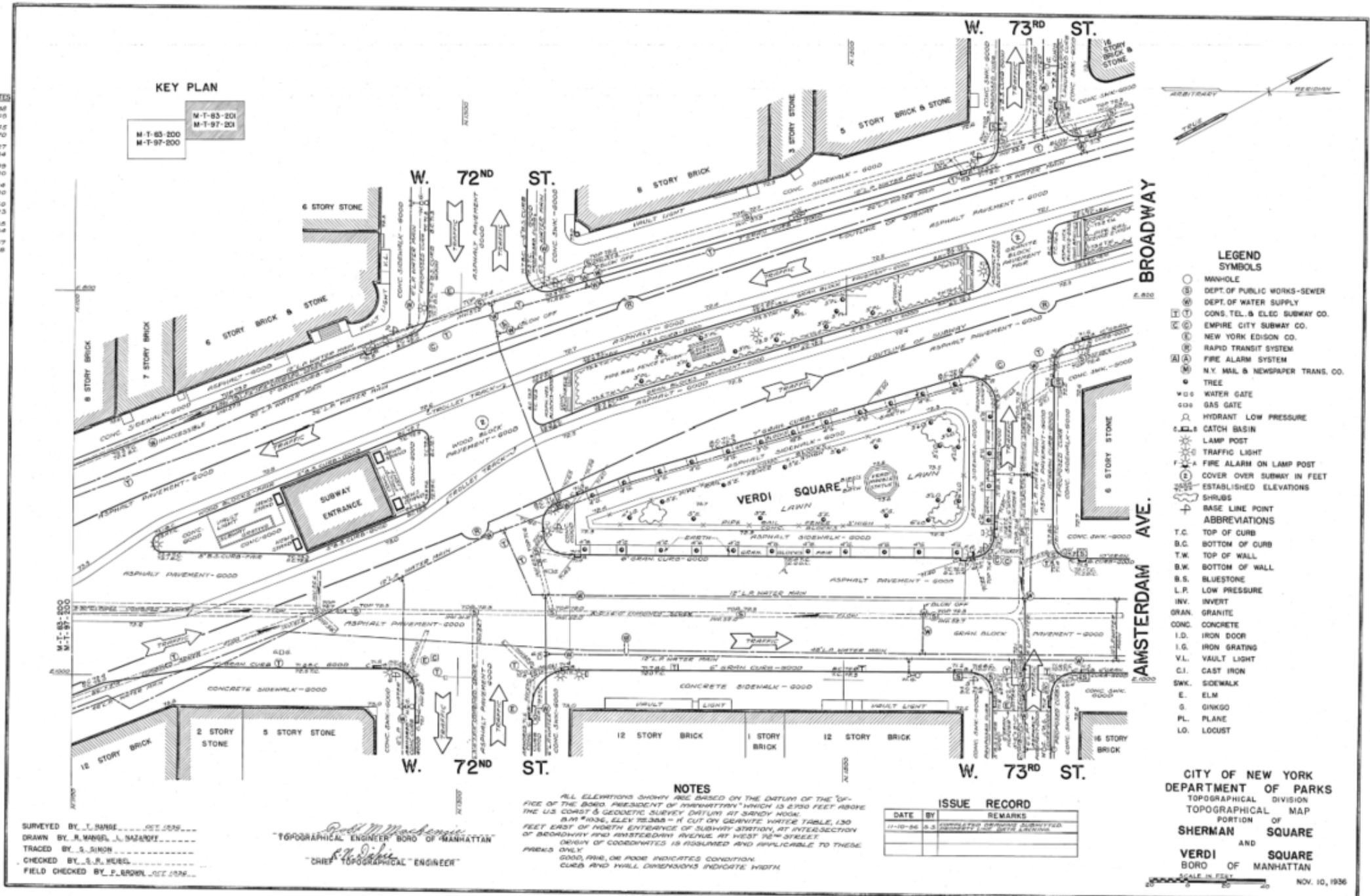


**MG-123M Installation of Water Service**  
**Verdi Square | Historical Mapping**

**TABLE OF COORDINATES**

TRAVERSE POINT	COORDINATES
2	N 1263.38 E 613.40
3	N 1348.45 E 735.70
4	N 1343.27 E 725.44
5	N 1567.33 E 1000.00
6	N 1266.14 E 1000.00
7	N 1572.60 E 830.23
8	N 1572.85 E 842.84
9	N 1350.87 E 821.68

**KEY PLAN**



- LEGEND SYMBOLS**
- MANHOLE
  - ⊕ DEPT. OF PUBLIC WORKS-SEWER
  - ⊕ DEPT. OF WATER SUPPLY
  - ⊕ CONG. TEL. & ELEC. SUBWAY CO.
  - ⊕ EMPIRE CITY SUBWAY CO.
  - ⊕ NEW YORK EDISON CO.
  - ⊕ RAPID TRANSIT SYSTEM
  - ⊕ FIRE ALARM SYSTEM
  - ⊕ N.Y. MAIL & NEWSPAPER TRANS. CO.
  - TREE
  - ⊕ WATER GATE
  - ⊕ GAS GATE
  - ⊕ HYDRANT LOW PRESSURE
  - ⊕ CATCH BASIN
  - ⊕ LAMP POST
  - ⊕ TRAFFIC LIGHT
  - ⊕ FIRE ALARM ON LAMP POST
  - ⊕ COVER OVER SUBWAY IN FEET
  - ⊕ ESTABLISHED ELEVATIONS
  - ⊕ SHRUBS
  - ⊕ BASE LINE POINT
- ABBREVIATIONS**
- T.C. TOP OF CURB
  - B.C. BOTTOM OF CURB
  - T.W. TOP OF WALL
  - B.W. BOTTOM OF WALL
  - B.S. BLUESTONE
  - L.P. LOW PRESSURE
  - INV. INVERT
  - GRAN. GRANITE
  - CONC. CONCRETE
  - I.D. IRON DOOR
  - I.G. IRON GRATING
  - V.L. VAULT LIGHT
  - C.I. CAST IRON
  - SWK. SIDEWALK
  - E. ELM
  - G. GINKGO
  - PL. PLANE
  - LO. LOCUST

**NOTES**

ALL ELEVATIONS SHOWN ARE BASED ON THE DATUM OF THE OFFICE OF THE BOARD PRESIDENT OF AMSTERDAM WHICH IS 2930 FEET ABOVE THE U.S. COAST & GEODETIC SURVEY DATUM AT BATTERY POINT. B.M. #1036, ELEV. 72.305 - IT CUT ON GRANITE WATER TABLE, 130 FEET EAST OF NORTH ENTRANCE OF SUBWAY STATION, AT INTERSECTION OF BROADWAY AND AMSTERDAM AVENUE AT WEST 72<sup>ND</sup> STREET. ORIGIN OF COORDINATES IS ASSUMED AND APPLICABLE TO THESE PLOTS ONLY.

GOOD, FAIR, OR POOR INDICATES CONDITION. CURB AND WALL DIMENSIONS INDICATE WIDTH.

**ISSUE RECORD**

DATE	BY	REMARKS
11-10-36	S.S.	ADDED TO SHEET

SURVEYED BY J. HANSE  
DRAWN BY R. WAGEL, J. SAZAROFF  
TRACED BY S. SIMON  
CHECKED BY S. R. HUBB  
FIELD CHECKED BY P. BROWN

*Robert M. Mackenzie*  
TOPOGRAPHICAL ENGINEER BORO OF MANHATTAN  
*R. J. DeLo*  
"CHIEF" TOPOGRAPHICAL ENGINEER

CITY OF NEW YORK  
DEPARTMENT OF PARKS  
TOPOGRAPHICAL DIVISION  
TOPOGRAPHICAL MAP  
PORTION OF  
**SHERMAN SQUARE**  
AND  
**VERDI SQUARE**  
BORO OF MANHATTAN  
SCALE IN FEET  
NOV. 10, 1936

M - T - 83 - 201  
M - T - 97 - 201

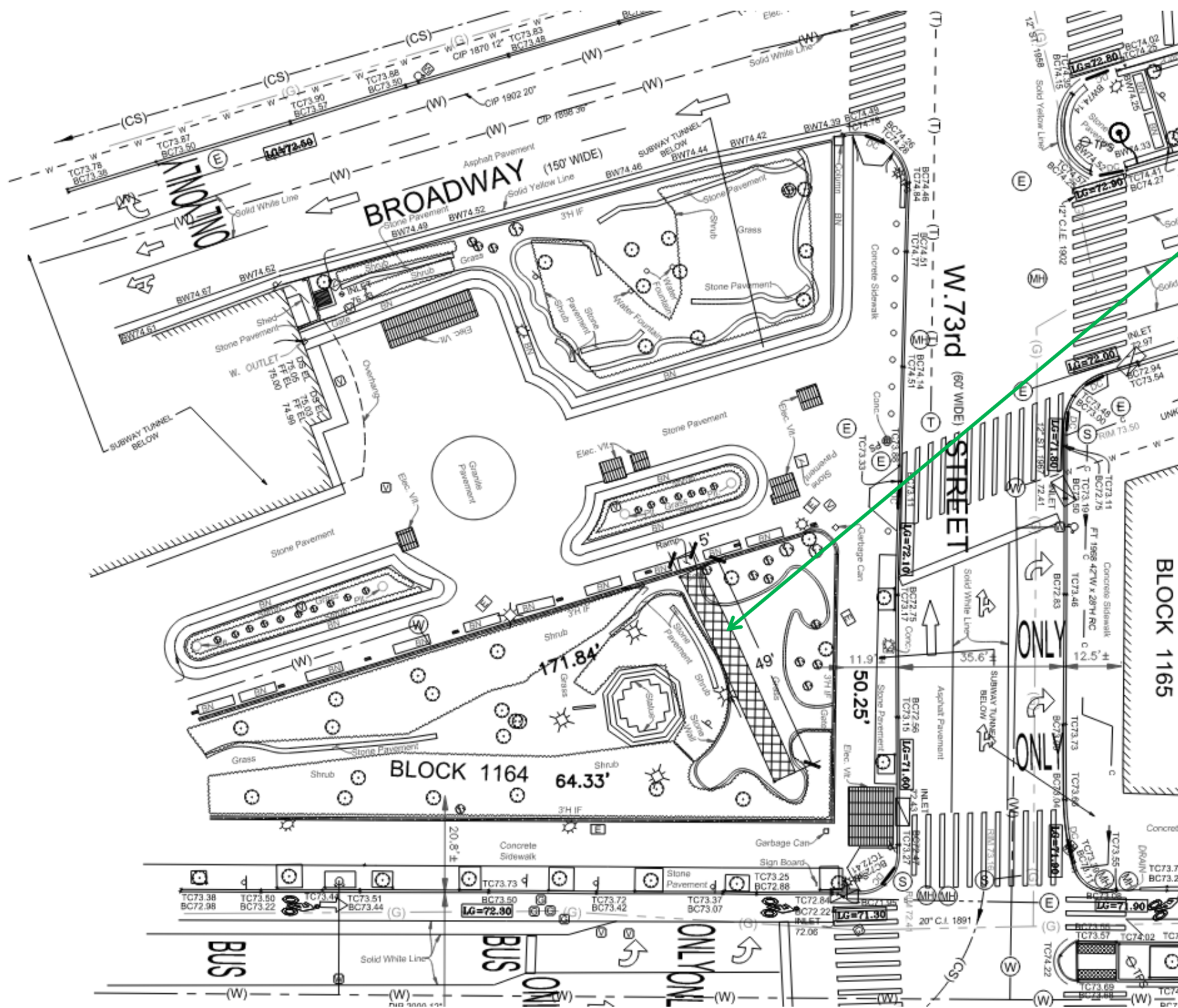
November 10, 1936



**MG-123M Installation of Water Service**  
**Verdi Square | Historical Mapping**

NYC Parks





Existing temporary access 5' x 49' path



**MG-123M Installation of Water Service**  
**Verdi Square | Survey**





1 – Verdi Square – 1940s



2 – Verdi Square – 1980s



3 – Verdi Square – 2024



NYC Parks

## MG-123M Installation of Water Service Verdi Square | Site Evolution

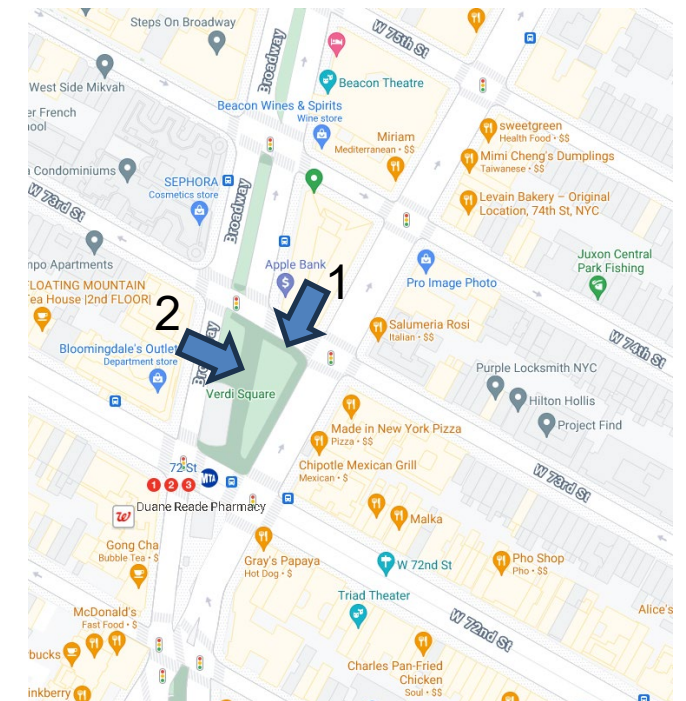




1 – W 73<sup>rd</sup> Street looking South



2 – Verdi Path looking East



**MG-123M Installation of Water Service**  
**Verdi Square | Existing Conditions**

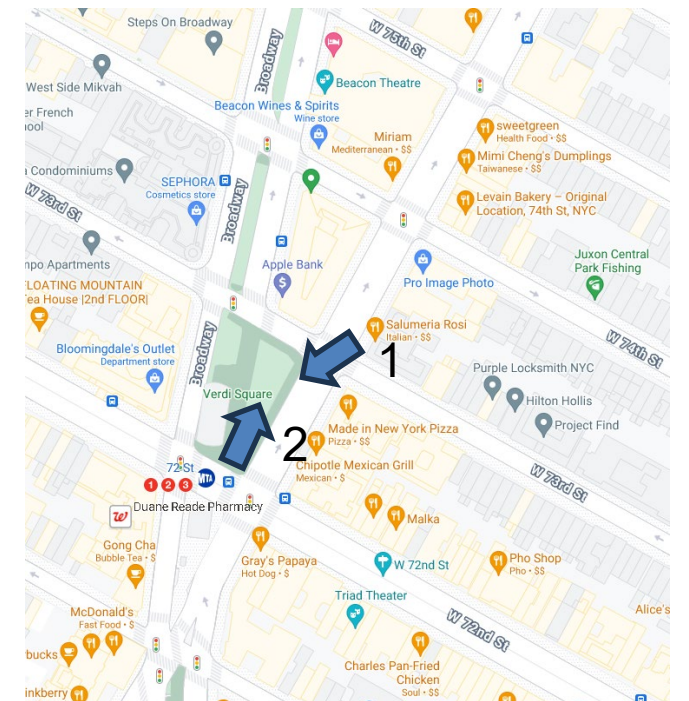




1 – Amsterdam Avenue looking South



2 – Giuseppe Verdi Monument



**MG-123M Installation of Water Service**  
**Verdi Square | Existing Conditions**

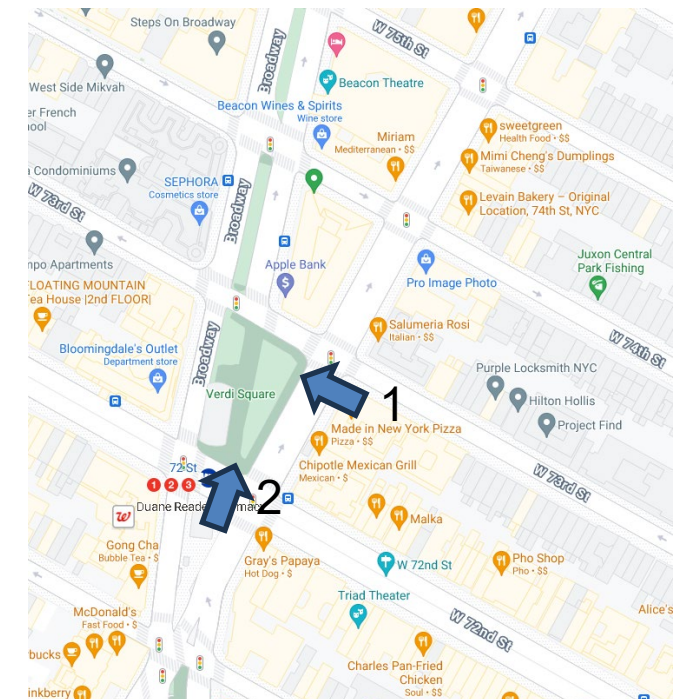




1 – Amsterdam Avenue looking West



2 – W 72nd Street looking North



NYC Parks

**MG-123M Installation of Water Service**  
**Verdi Square | Existing Conditions**



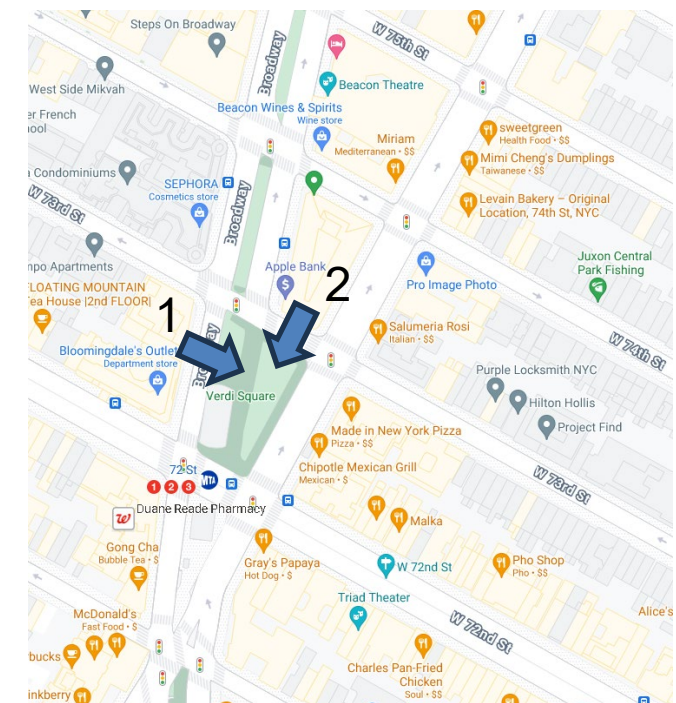




1 – Verdi Path looking East



2 – Verdi Path looking South



**MG-123M Installation of Water Service**  
**Verdi Square | Existing Conditions**



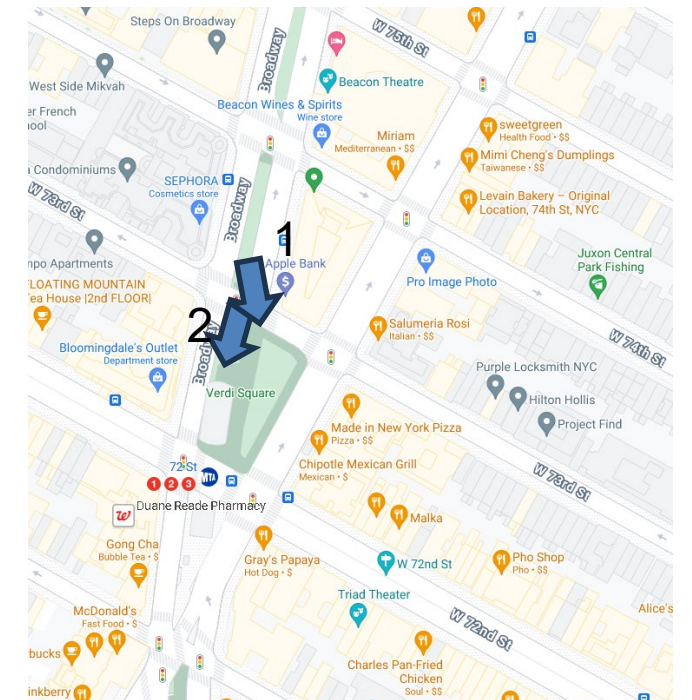




1 – W 73<sup>rd</sup> Street looking Southeast



2 – Verdi Path looking South



**MG-123M Installation of Water Service**  
**Verdi Square | Existing Conditions**



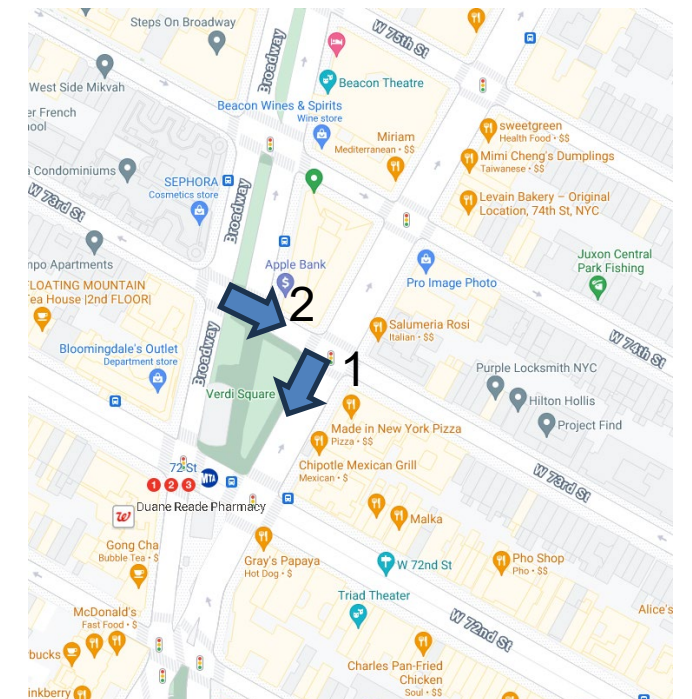




1 – Amsterdam Avenue looking South



2 – W 73rd Street looking East



NYC Parks

**MG-123M Installation of Water Service**  
**Verdi Square | Existing Conditions**



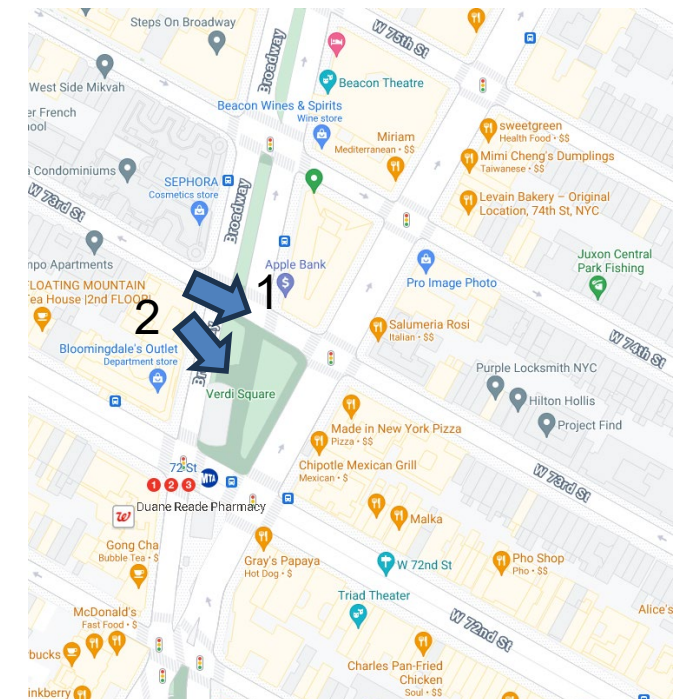




1 – W 73<sup>rd</sup> Street looking East



2 – W 73<sup>rd</sup> Street looking Southeast



NYC Parks

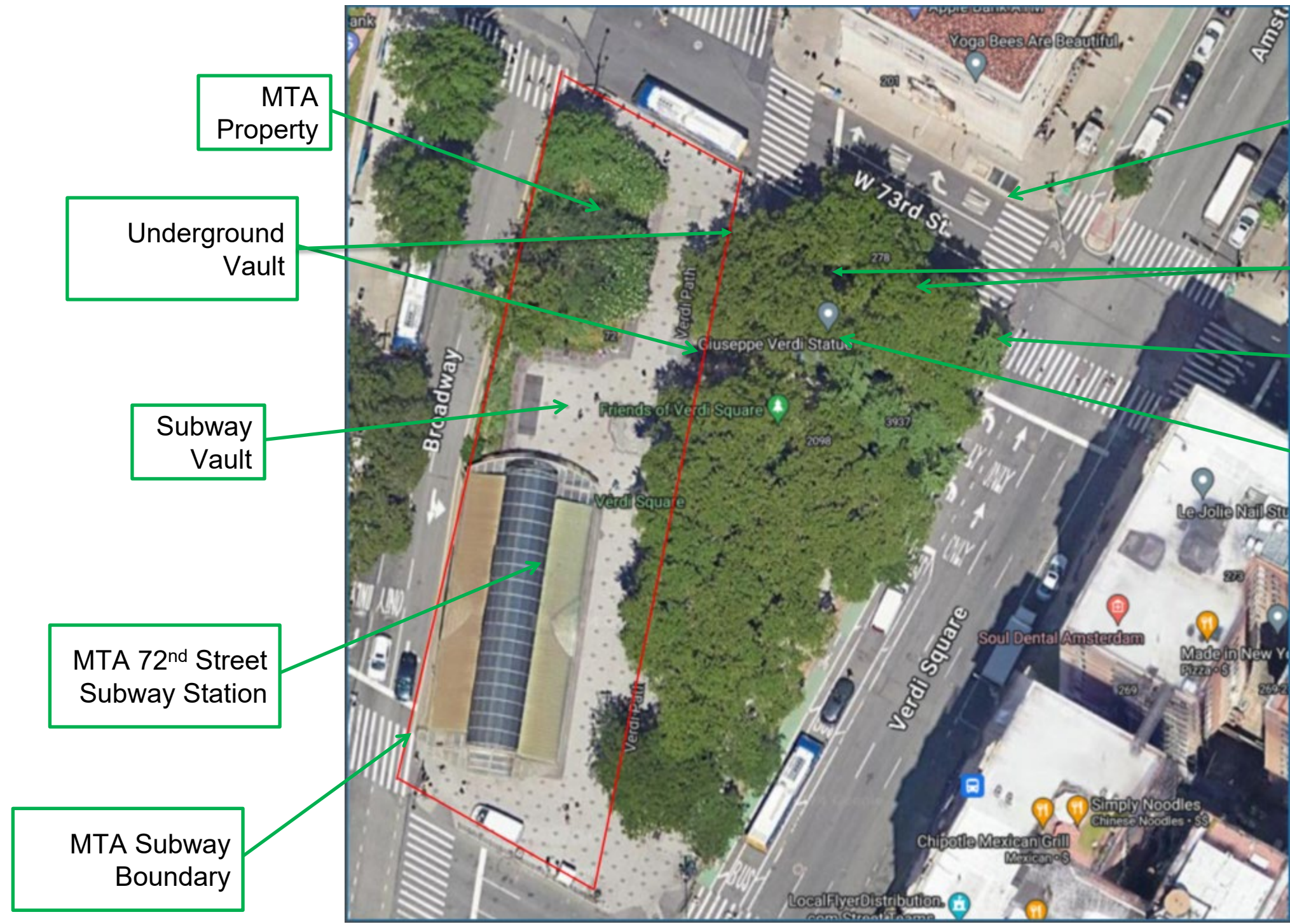
## MG-123M Installation of Water Service Verdi Square | Existing Conditions







# MG-123M Installation of Water Service Verdi Square | RPZ and Enclosure Location



MTA Property

Underground Vault

Subway Vault

MTA 72<sup>nd</sup> Street Subway Station

MTA Subway Boundary

Underground Vault

Existing trees

Existing Catch Basin

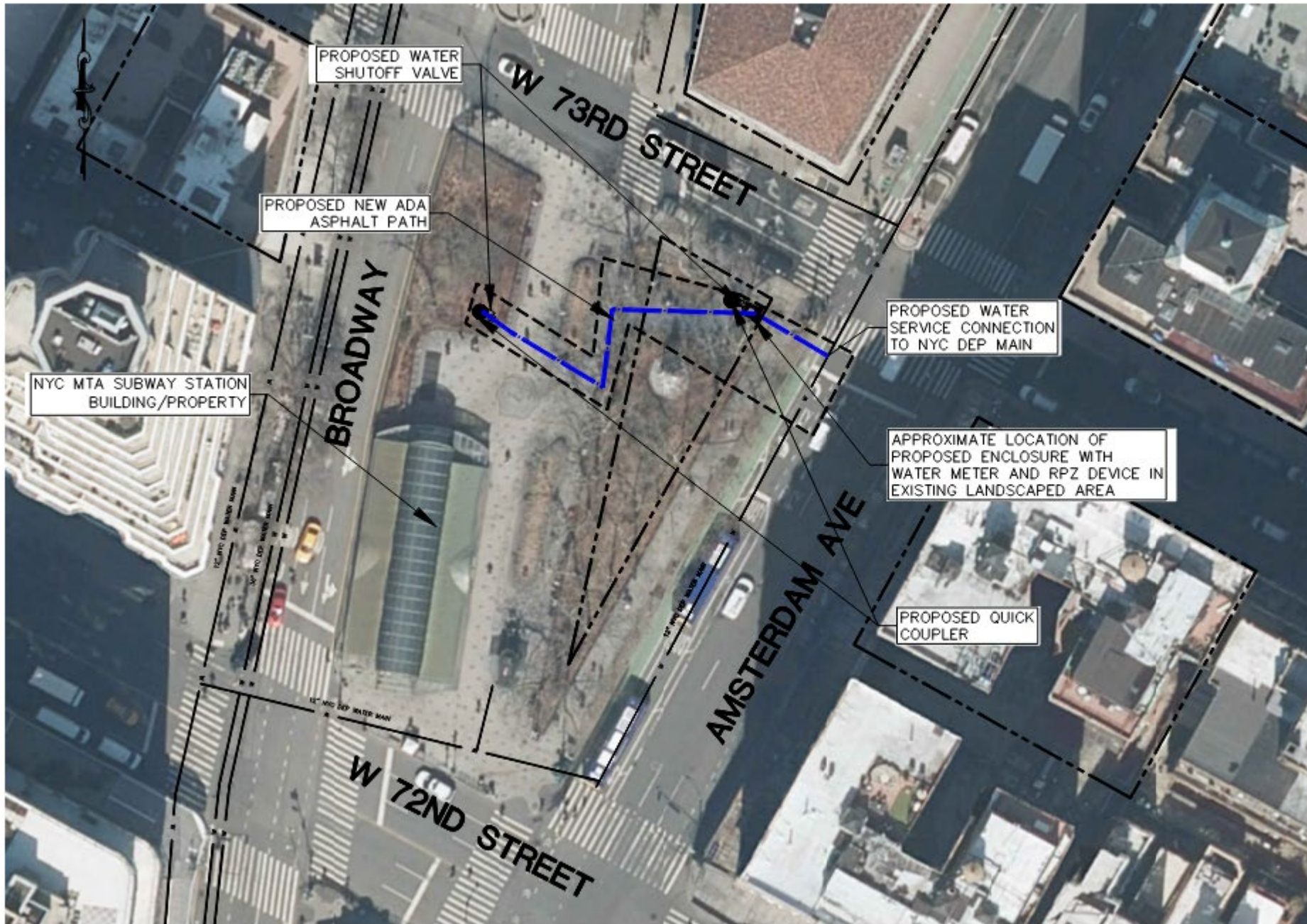
Verdi Statue

### Constraints

- Existing trees and tree roots
- Multiple existing underground vaults
- Existing catch basin
- Existing monument statue
- MTA property (west garden area)
- Existing stone benches
- Existing MTA subway

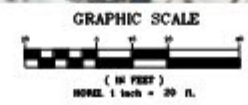






**LEGEND**

EXISTING WATER MAIN	---
CONTRACT LIMIT LINE	----
PROPOSED UNDERGROUND WATER SERVICE	—■—
PROPOSED QUICK COUPLER	●
PROPOSED WATER SHUTOFF VALVE	⊕

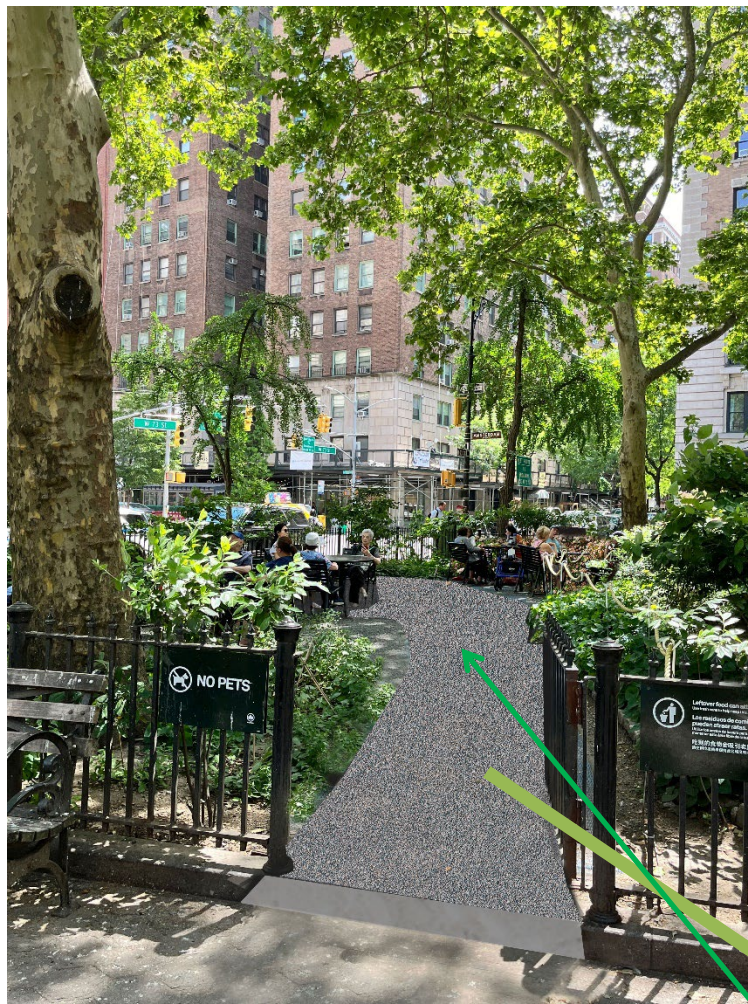


**MG-123M Installation of Water Service**  
 Verdi Square | Schematic Design

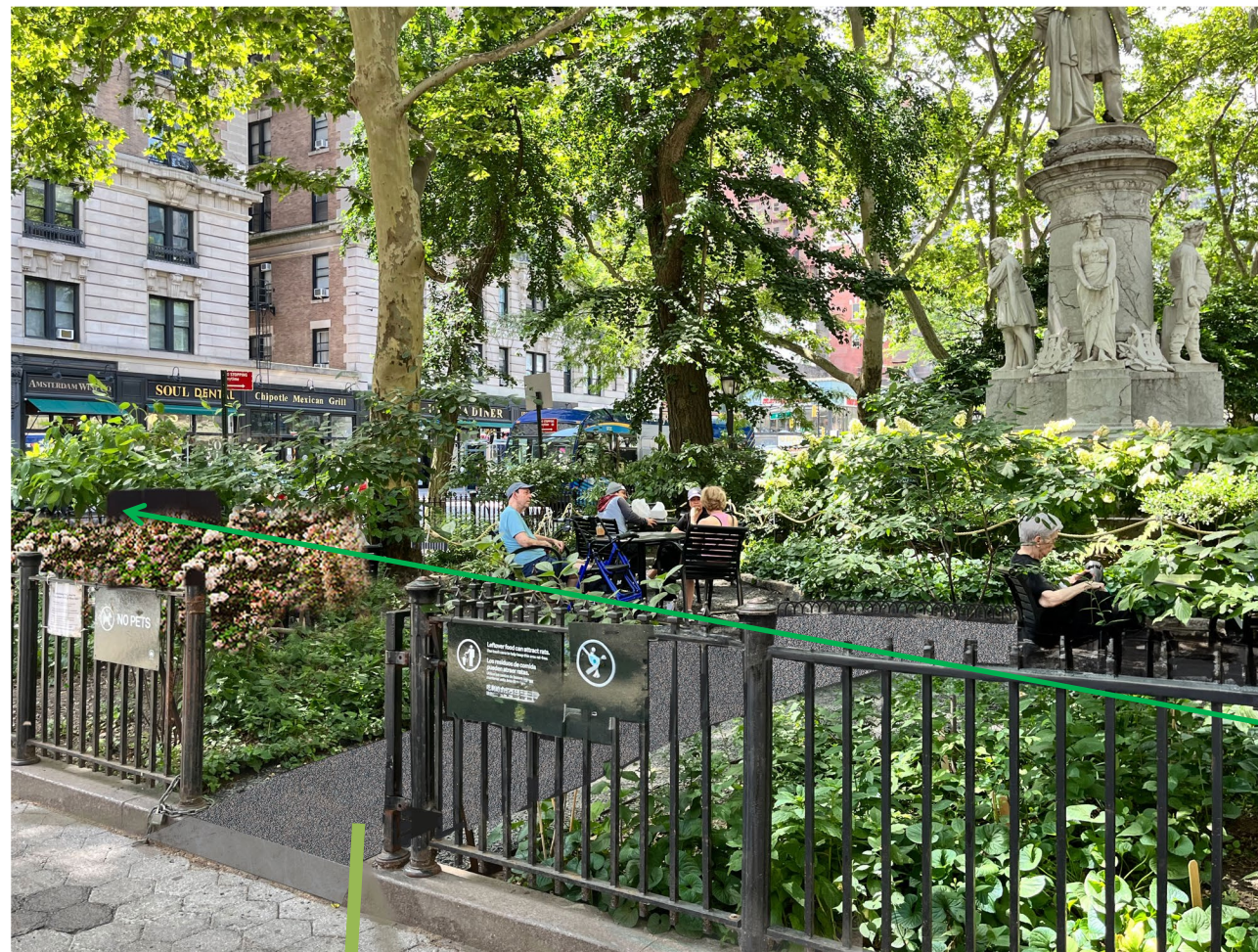




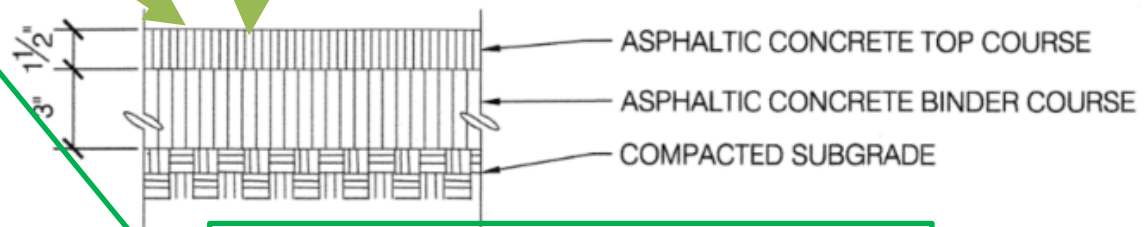




1 - Verdi Path looking West

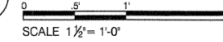


2 - Verdi Path looking South

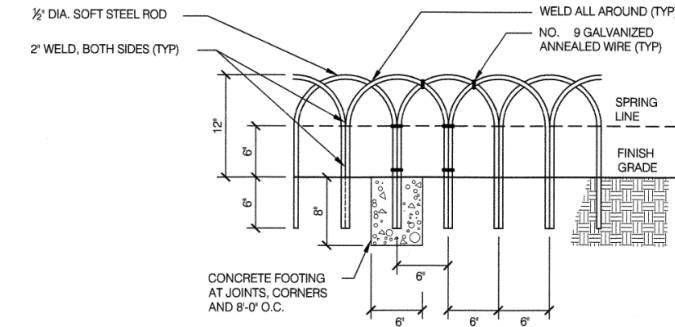


**PROPOSED ASPHALT WALKWAY WITH STEEL EDGING, EXISTING GRANITE CURB TO BE CUT AND SUNK**

**5 WICKET FENCE - 12" HEIGHT**

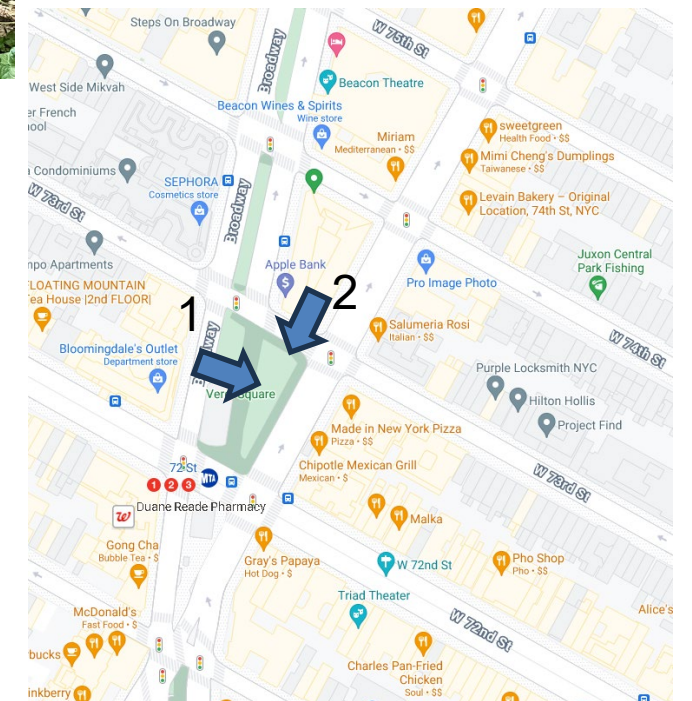


NOTE: ASSEMBLE IN 16'-0" LENGTHS



**Proposed Wicket Fence Installed directly in ground**

**APPROXIMATE LOCATION OF PROPOSED RPZ ENCLOSURE (38" HIGH X 46" WIDE)**



**MG-123M Installation of Water Service Verdi Square | Proposed Conditions**

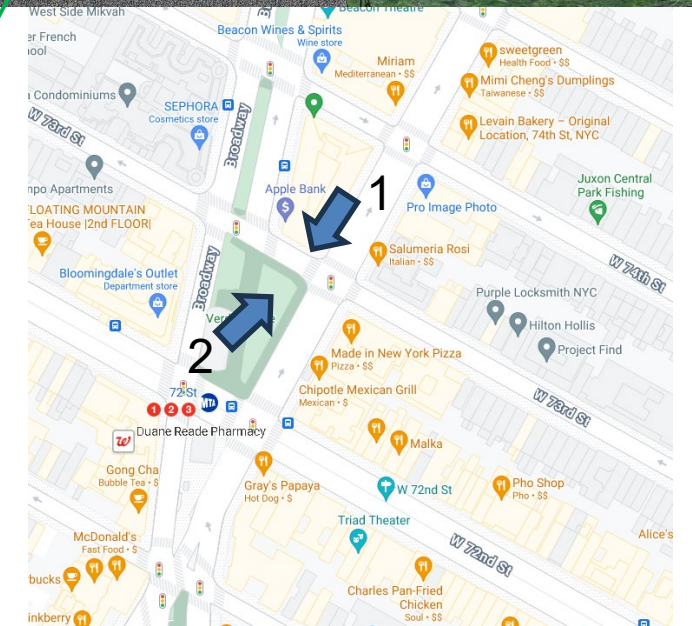




1 - Verdi Square looking South



2 - Verdi Square looking North



APPROXIMATE LOCATION OF PROPOSED RPZ ENCLOSURE (38" HIGH X 46" WIDE)



NYC Parks

**MG-123M Installation of Water Service**  
**Verdi Square | Proposed Conditions**





Aluminum Enclosure

### Aluminum

- Safe-T-Cover Model no. 200SN-AL (46" x 19")
- Color – Black

### Benefits:

- Vandal Proof: permanent anchor to concrete pad
- Vandal Proof: durable material
- Vandal Proof: add enhanced locking mechanism
- No underground vault:
  - shallow excavation
  - underground drain not needed
  - leak detection alarm inside vault not needed



Quick Coupler

RPZ Enclosure with RPZ and Water Meter – Aluminum RPZ Enclosure



NYC Parks

## MG-123M Installation of Water Service

Verdi Square | RPZ Enclosure with RPZ and Water Meter / Quick Coupler





Otto Luyken- Cherry Laurel





1 – Bryant Park



2 – Jackson Square



NYC Parks

**MG-123M Installation of Water Service**  
**Verdi Square | Precedents**





1 – Madison Square Park



2 – Greeley Square Park



NYC Parks

## MG-123M Installation of Water Service Verdi Square | Precedents

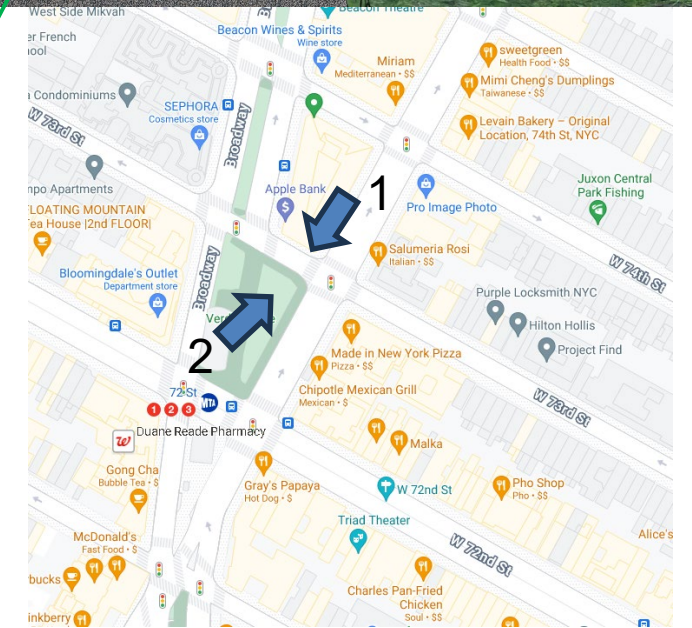




1 - Verdi Square looking South



2 - Verdi Square looking North



APPROXIMATE LOCATION OF PROPOSED RPZ ENCLOSURE (38" HIGH X 46" WIDE)



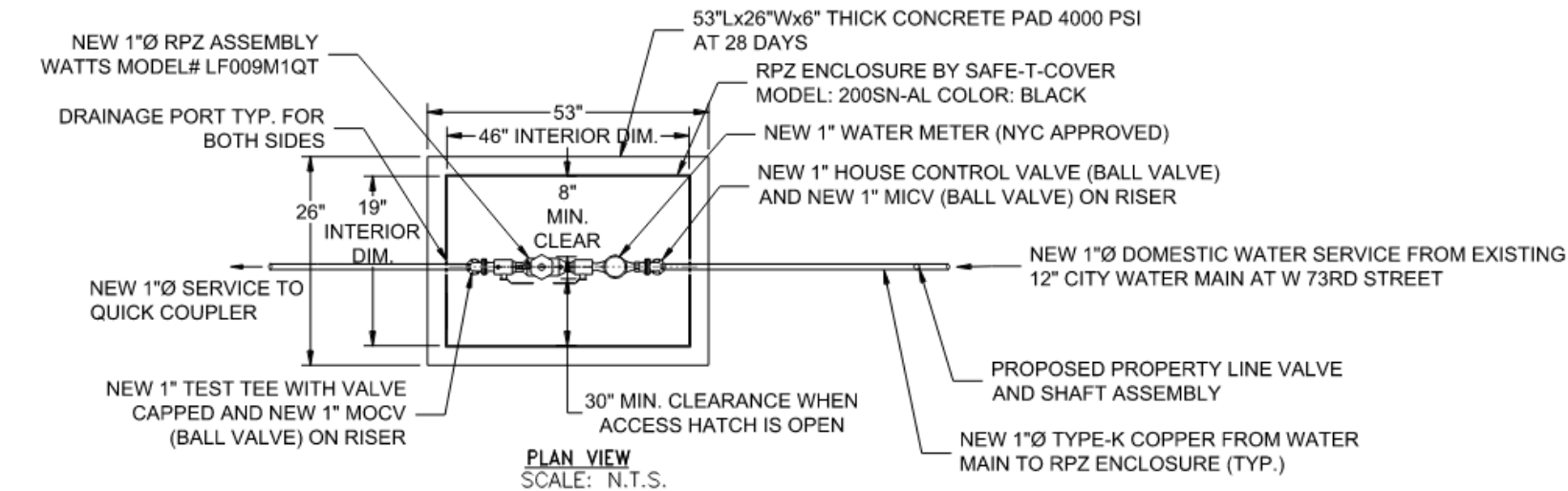
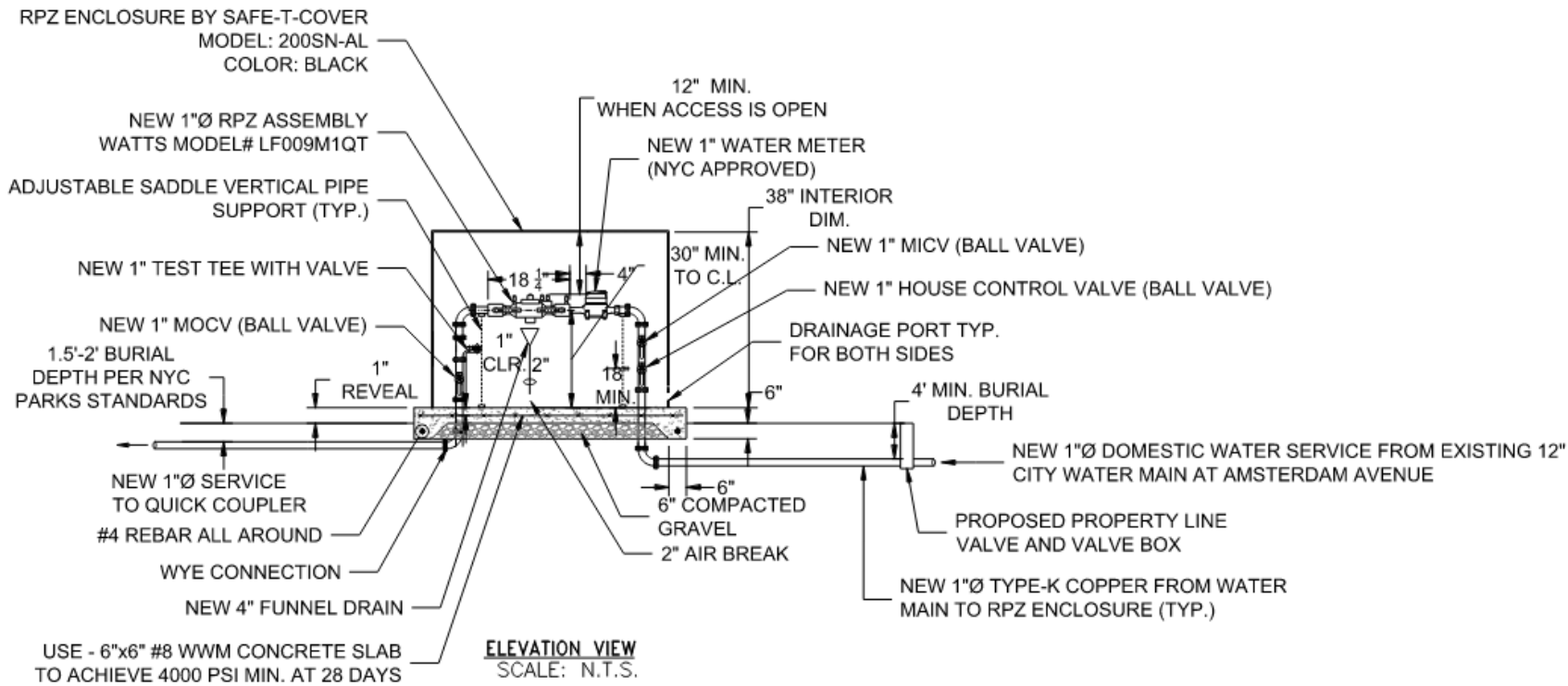




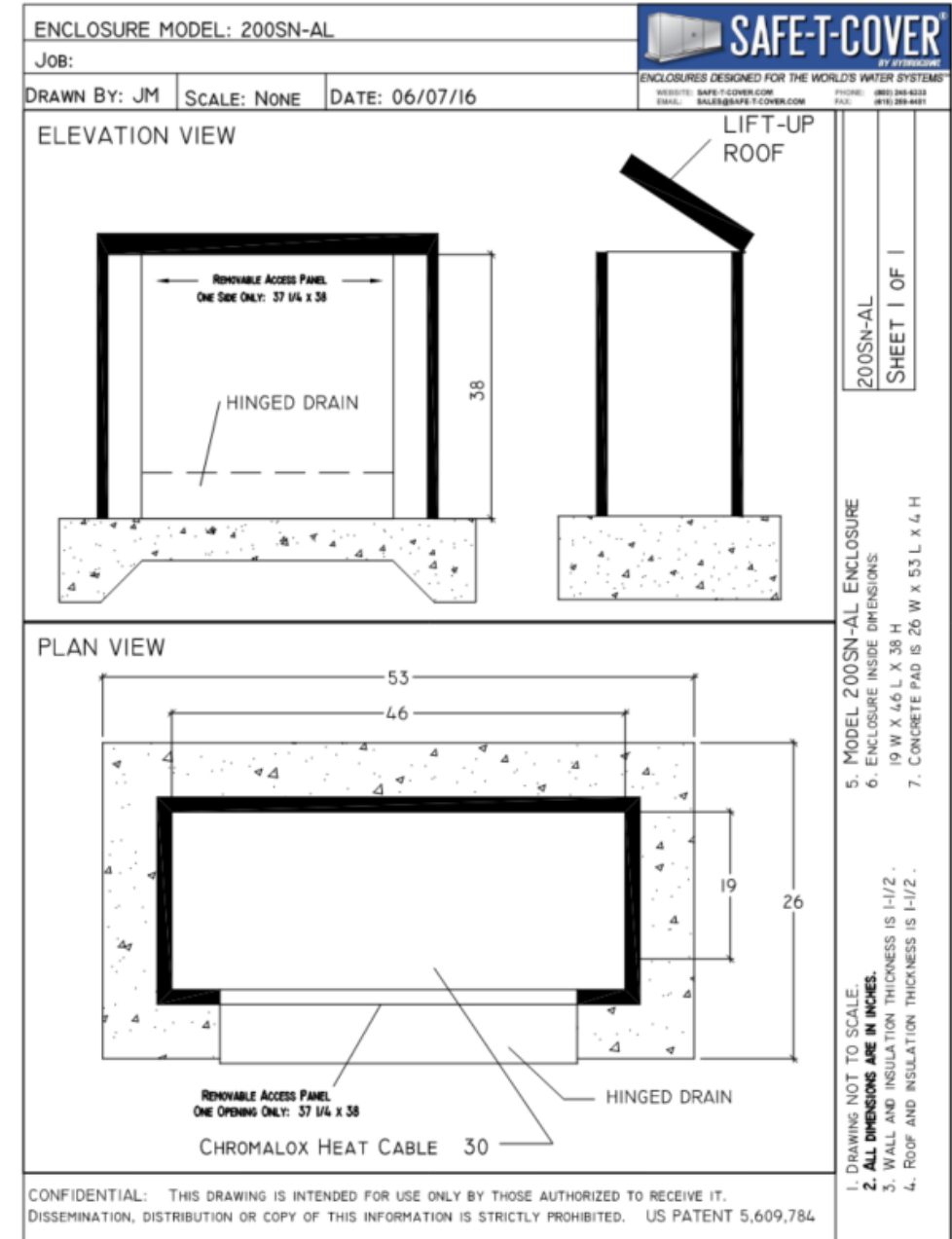
**Parks**

# **APPENDIX**





**RPZ Enclosure with RPZ and Water Meter – Aluminum RPZ Enclosure**



**Safe-T-Cover Model no. 200SN-AL**



NYC Parks

**MG-123M Installation of Water Service**  
**Verdi Square | RPZ Enclosure**