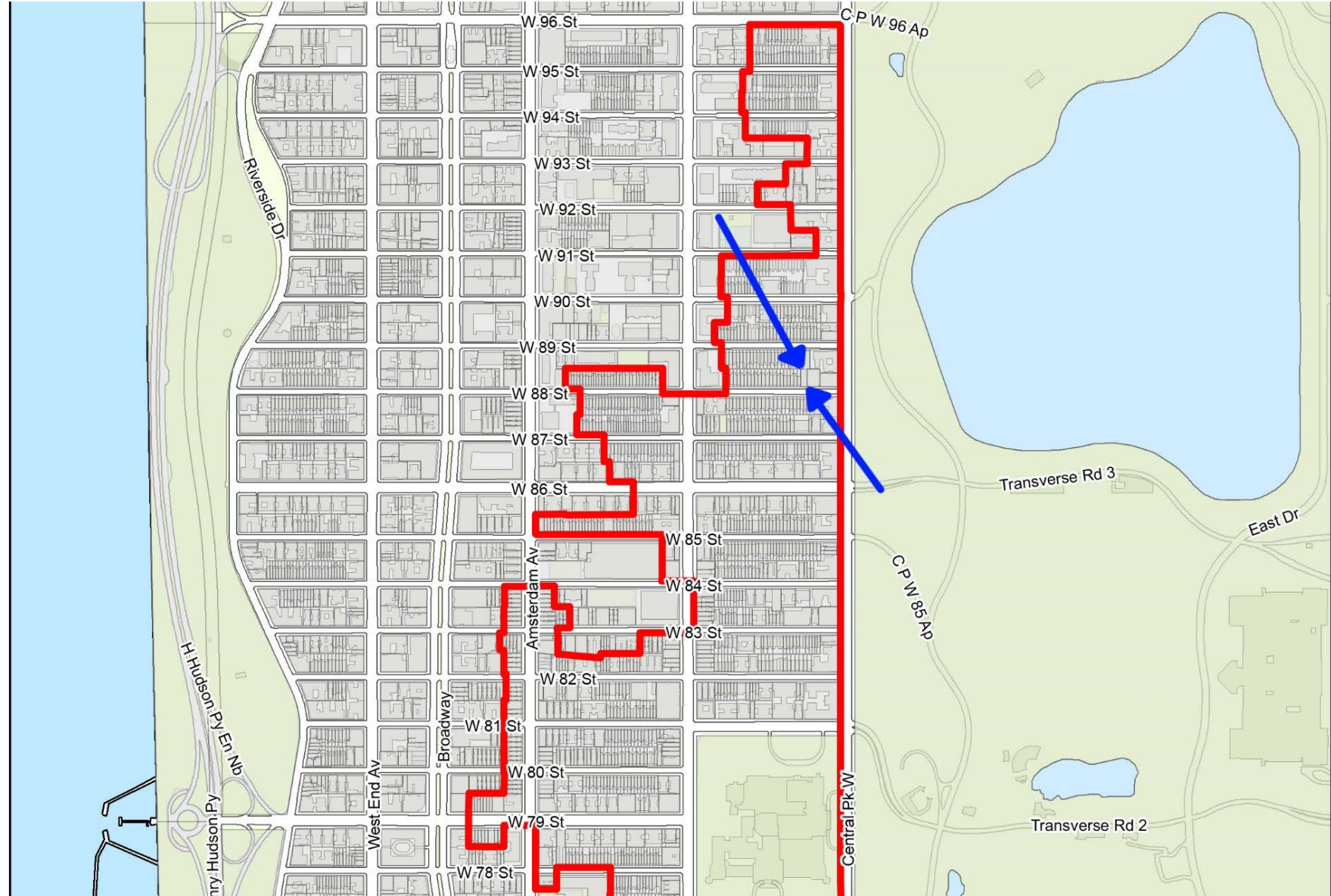
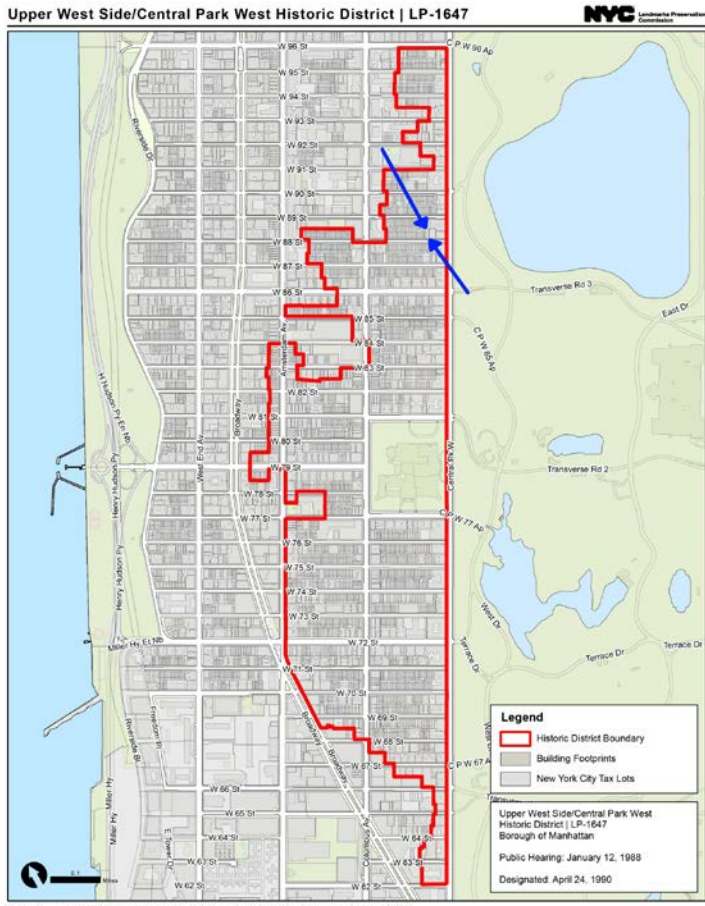


17 WEST 88TH STREET MANHATTAN, NY

DWIGHT SCHOOL: BANNERS

HISTORIC MAP



EXISTING CONDITIONS

11/5/24

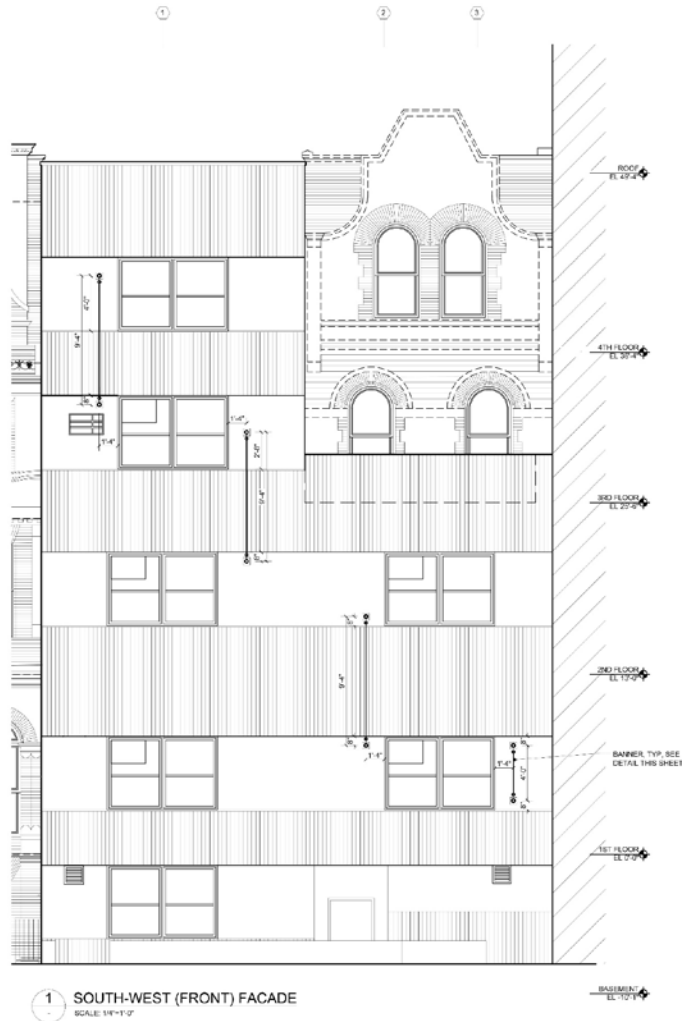


2024.11.5

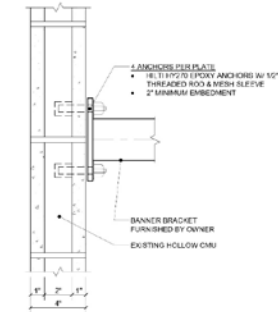


DWIGHT SCHOOL
IB World School

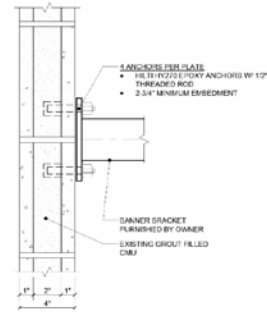
MAGNUMOPUS
ARCHITECTURE



1 SOUTH-WEST (FRONT) FACADE
SCALE: 1/4"=1'-0"

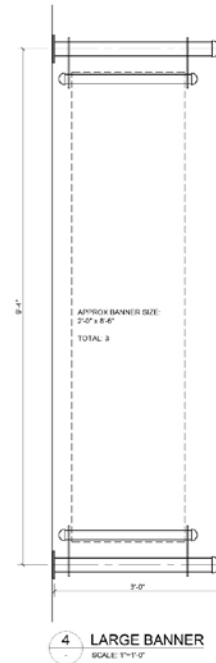


2 BRACKET ATTACHMENT - HOLLOW CMU
SCALE: 3/4"=1'-0"

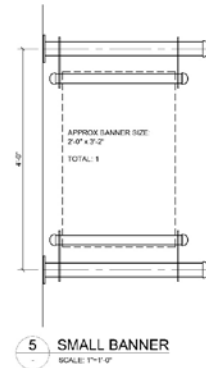


3 BRACKET ATTACHMENT - GROUT FILLED CMU
SCALE: 3/4"=1'-0"

NOTE:
PROPOSED BANNERS SHALL DEPICT
THE SCHOOL'S STUDENTS ARTWORK
& SHALL BE CHANGED ANNUALLY



4 LARGE BANNER
SCALE: 1"=1'-0"



5 SMALL BANNER
SCALE: 1"=1'-0"

NO.	DESCRIPTION	DATE
	FILED FOR LPC APPROVAL	05/12/24

PROJECT
DWIGHT SCHOOL
BANNER PROJECT
18 WEST 88TH STREET
MANHATTAN, NY

DRAWING TITLE
SOUTH-WEST (FRONT)
FACADE, BRACKET
ATTACHMENTS

DATE: 01/26/24
PROJECT: 24049
SHEET: OF 1
A-101.00

ESCAN STICKER

DESIGNATION PHOTO



DWIGHT SCHOOL
IB World School

MAGNUMOPUS
ARCHITECTURE

1940 PHOTO



DWIGHT SCHOOL
IB World School

MAGNUMOPUS
ARCHITECTURE

[Home](#) > [Sign Hardware](#) > [Banner Hanging Hardware Kits](#) > BFWMBHDT36

Wall-Mounted Banner Hardware with Half Dome Finials, Set of 2 - Black





STREETScape

PROPOSED WORK

Community Board 7 Members:

The existing façade at 18 west 88th street in Manhattan, NY (block 1202, lot 40) which is part of the “Dwight School” is composed of ribbed face concrete block and smooth faced concrete block alternating between floors. The structure is an existing four-story building with a basement originally constructed in 1897. In 1985, an addition was approved by L.P.C. & the D.O.B. to construct an addition to the front of the building that is faced with the concrete block we see today.

The Dwight School is proposing to install four banners be placed along the façade (see attached drawings). The School will hold an art competition, held annually, in which the students who win will have their artwork displayed on these banners. Three banners will be approximately 2’-0” by 8’-6” and one (lower to the ground floor) will be approximately 2’-0” by 3’-2”.

As this structure is located in a historical district, L.P.C. is requesting Community Board 7’s approval before giving their own approval to Docket # LPC-25-01525.

Attached, please find a PowerPoint presentation which includes existing photos, our rendering of the proposed work, and close-up photos of the banner hangers and location of proposed banners.

We look forward to answering any questions or concerns you may have at our upcoming hearing.



PROPOSED VIEW FROM
SIDEWALK



BANNERS



SIMILAR PROJECTS

205 ROCKAWAY PARKWAY, BROOKLYN



725 PARK AVENUE, MANHATTAN



DWIGHT SCHOOL
IB World School

MAGNUMOPUS
ARCHITECTURE