



256 WEST 75TH STREET

LEGALIZATION OF REPLACE FRONT DOOR, THE FRONT
FAÇADE WINDOWS, THE GRANITE CLAD AT THE
STOOP, AND REAR FAÇADE MODIFICATION.

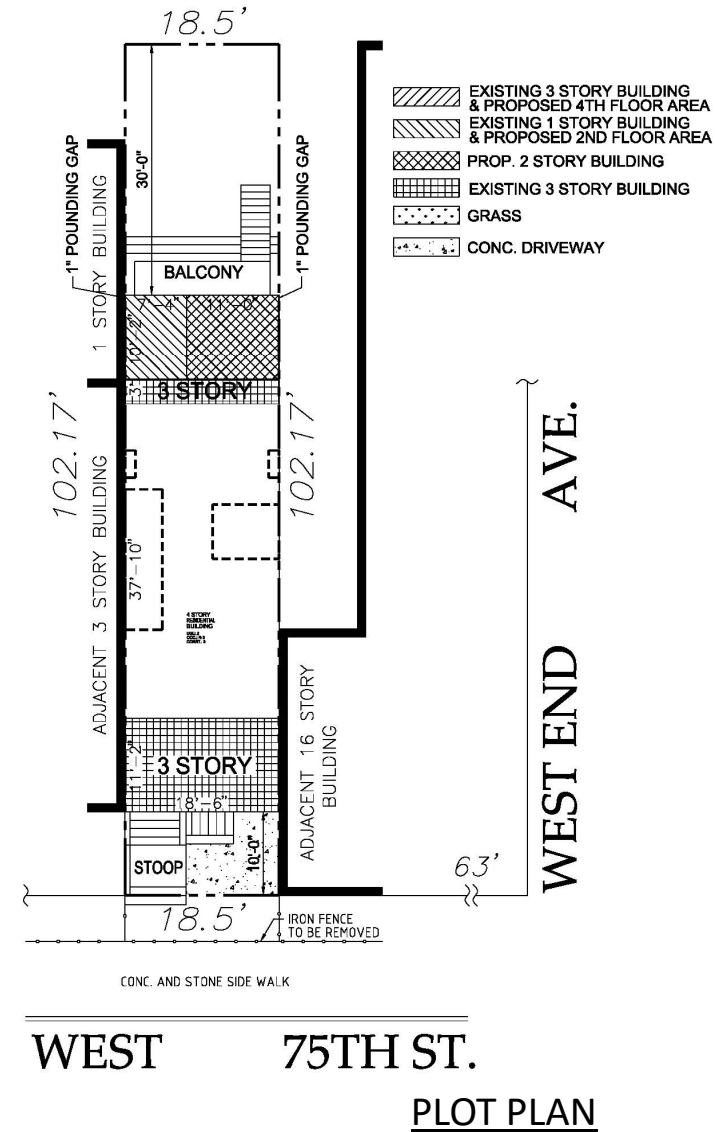
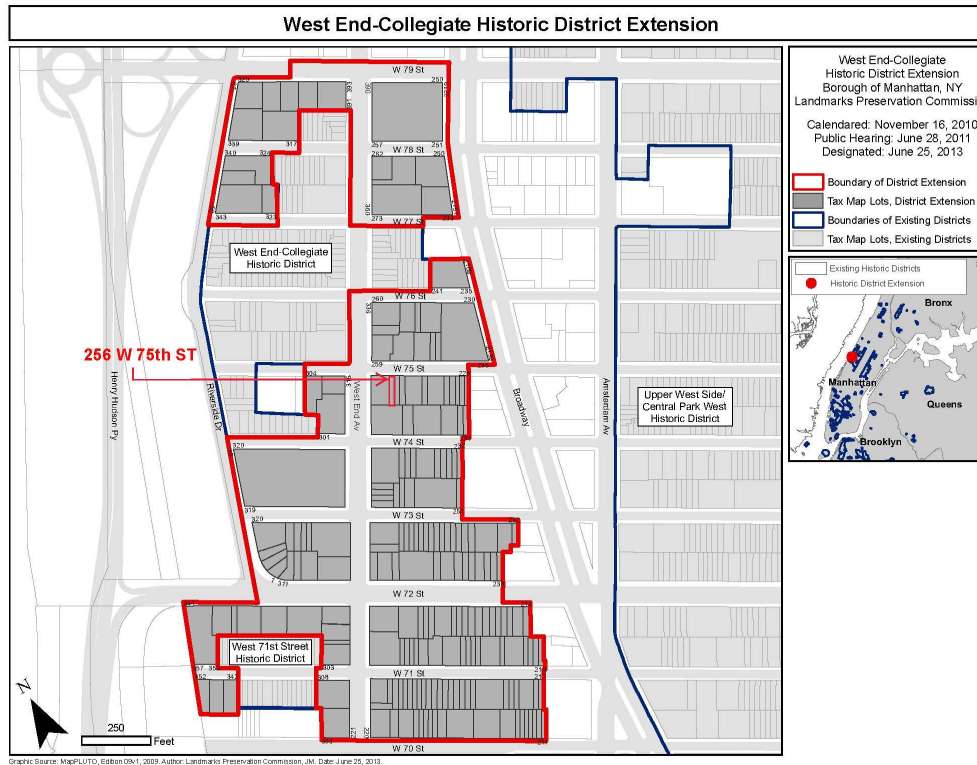
LPC-24-08232

LOCATION

- DESIGNATED LANDMARKS AREA
- West End Collegiate Extension

DESIGNATION REPORT

- TAX MAP BLOCK: 1166 LOT: 161
- TYPE: ROW HOUSE
- STYLE: QUEEN ANNE
- STORIES: 3 AND BASEMENT
- MATERIAL(S): BRICK, STONE

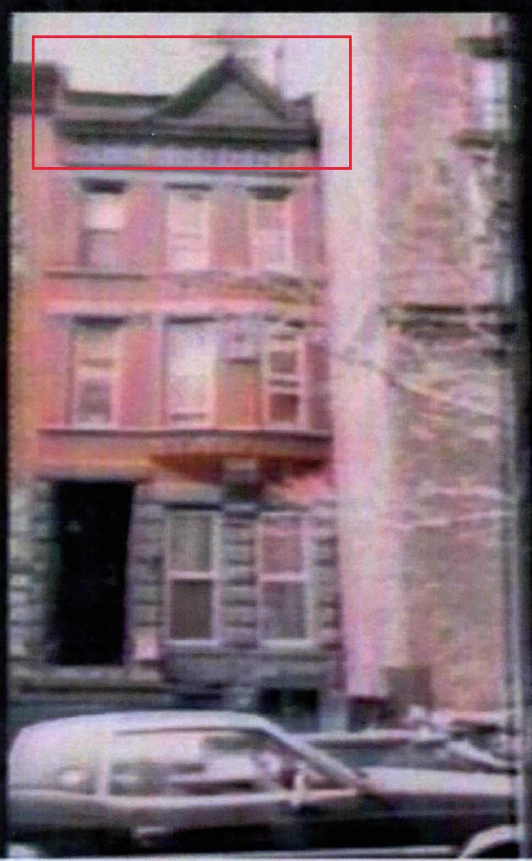


HISTORIC PHOTOS



1940 TAX PHOTO

LPC 003



1980 TAX PHOTO



CONDITIONS BEFORE WORK

256 WEST 75TH STREET NEW YORK NY

CONDITIONS BEFORE WORK



FRONT FACADE

LPC 004



FRONT FACADE

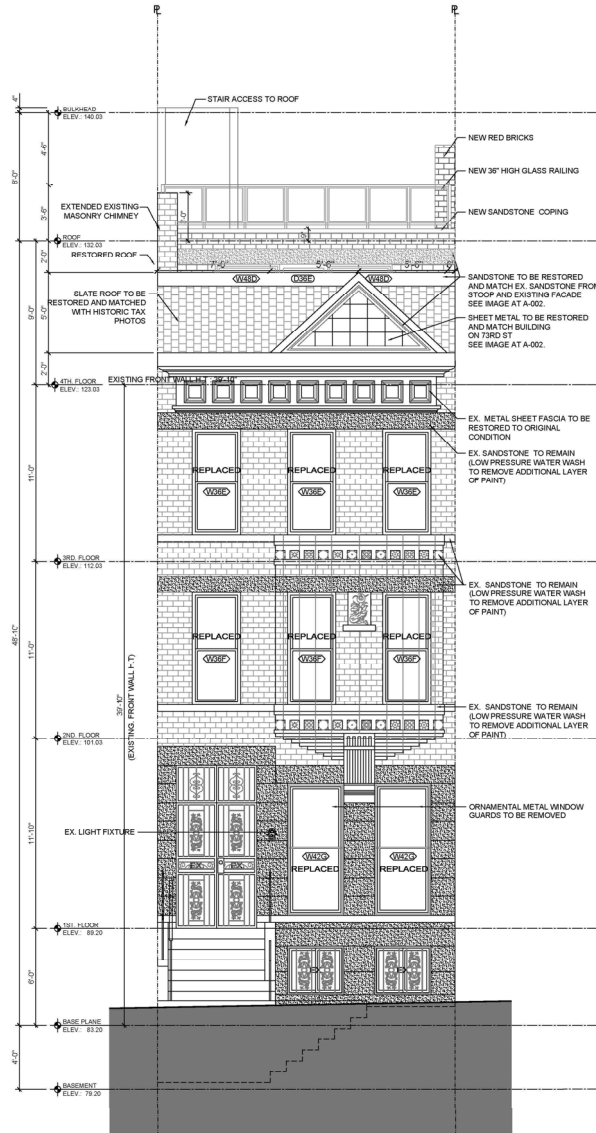


REAR FACADE

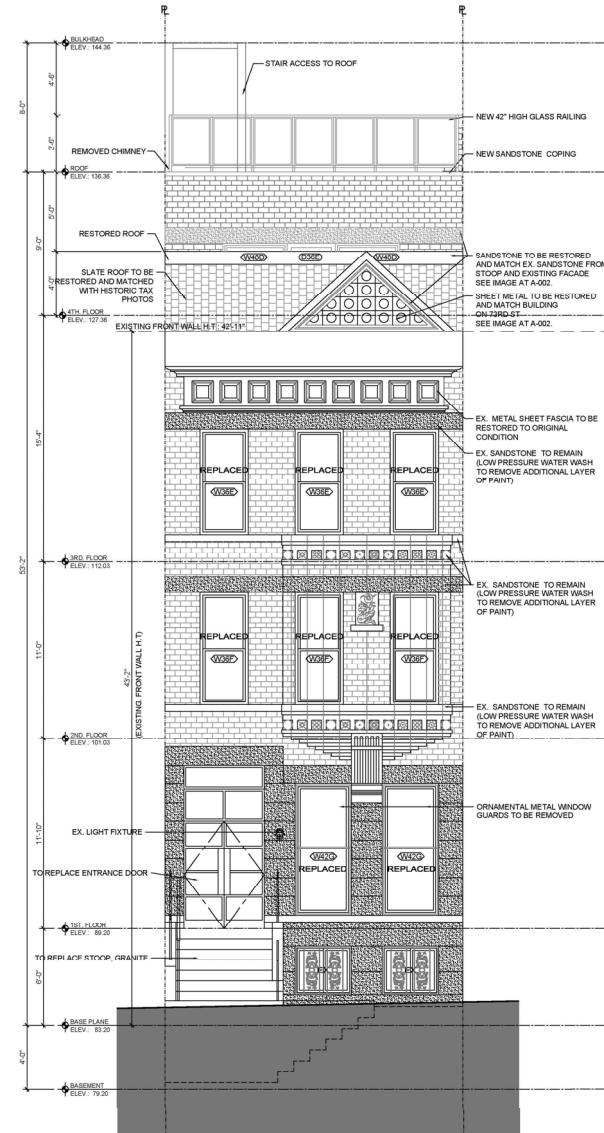
256 WEST 75TH STREET NEW YORK NY



FRONT ELEVATION BEFORE WORK



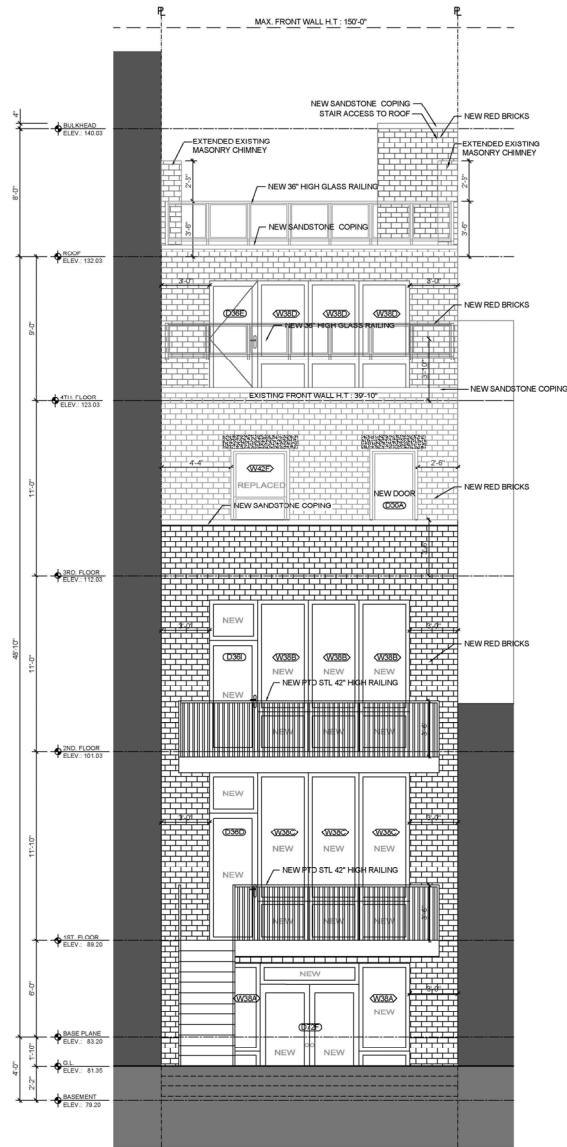
APPROVED FRONT ELEVATION



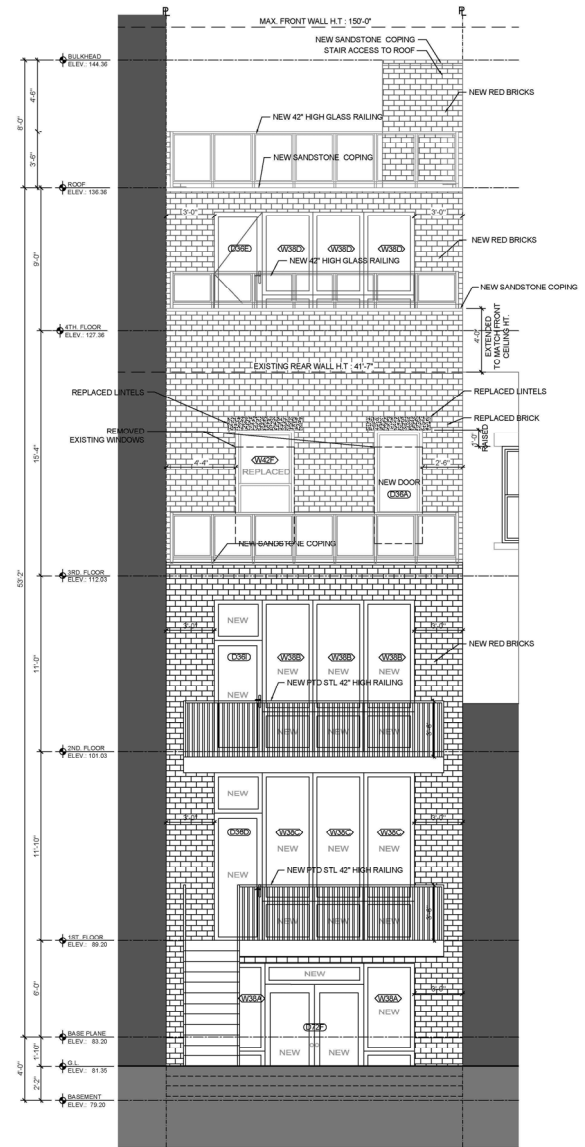
AS BUILT FRONT ELEVATION



REAR ELEVATION BEFORE WORK



APPROVED REAR ELEVATION



AS BUILT REAR ELEVATION

VISIBILITY ON THE PUBLIC

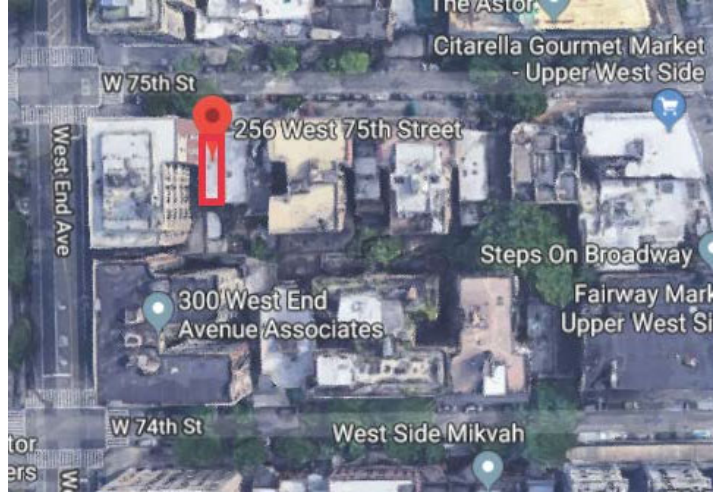
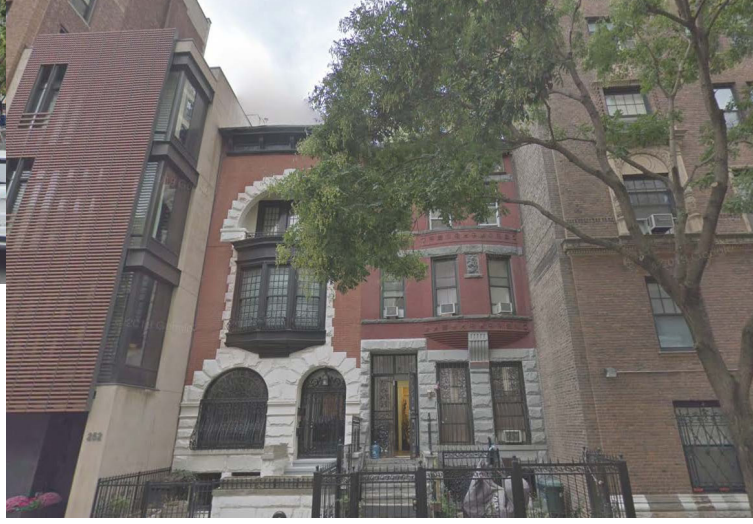


VIEWPOINTS

VIEW FROM IN FRONT OF 75 STREET



VIEW FROM EAST CORNER OF 75 STREET



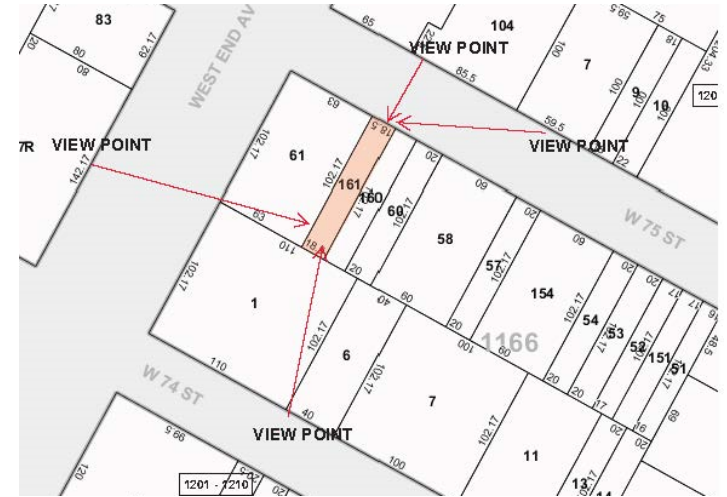
GOOGLE VIEW OF SURROUNDING BLOCK

VISIBILITY ON THE PUBLIC

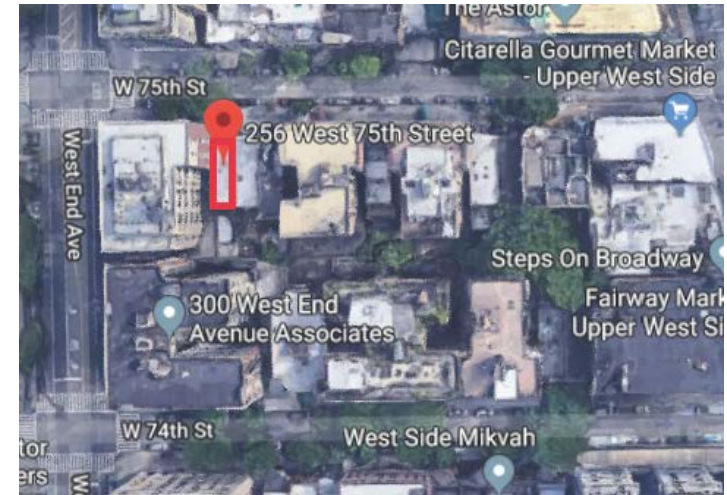


VIEW FROM WEST END AVE

VIEW FROM 74 STREET



VIEWPOINTS



GOOGLE VIEW OF SURROUNDING BLOCK

REAR FAÇADE MODIFICATION



CONDITIONS BEFORE WORK

LPC 009



AS BUILT CONDITIONS



256 WEST 75TH STREET NEW YORK NY

REAR FAÇADE MODIFICATION

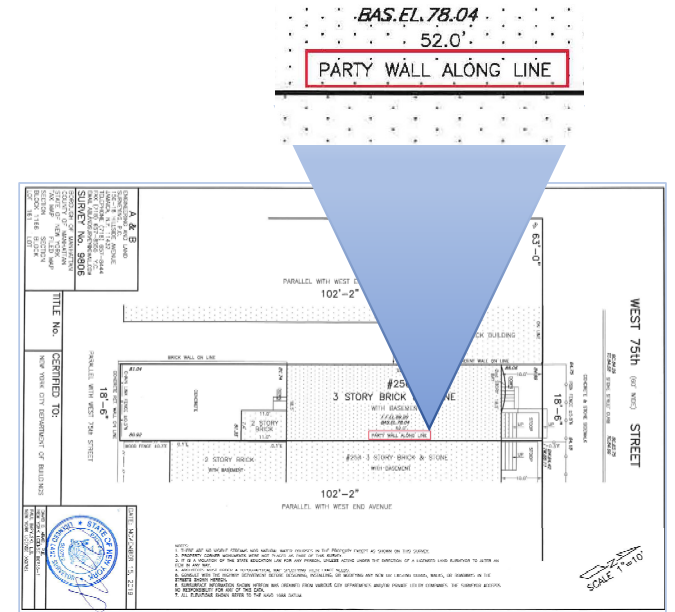


CONDITIONS BEFORE WORK

LPC 010

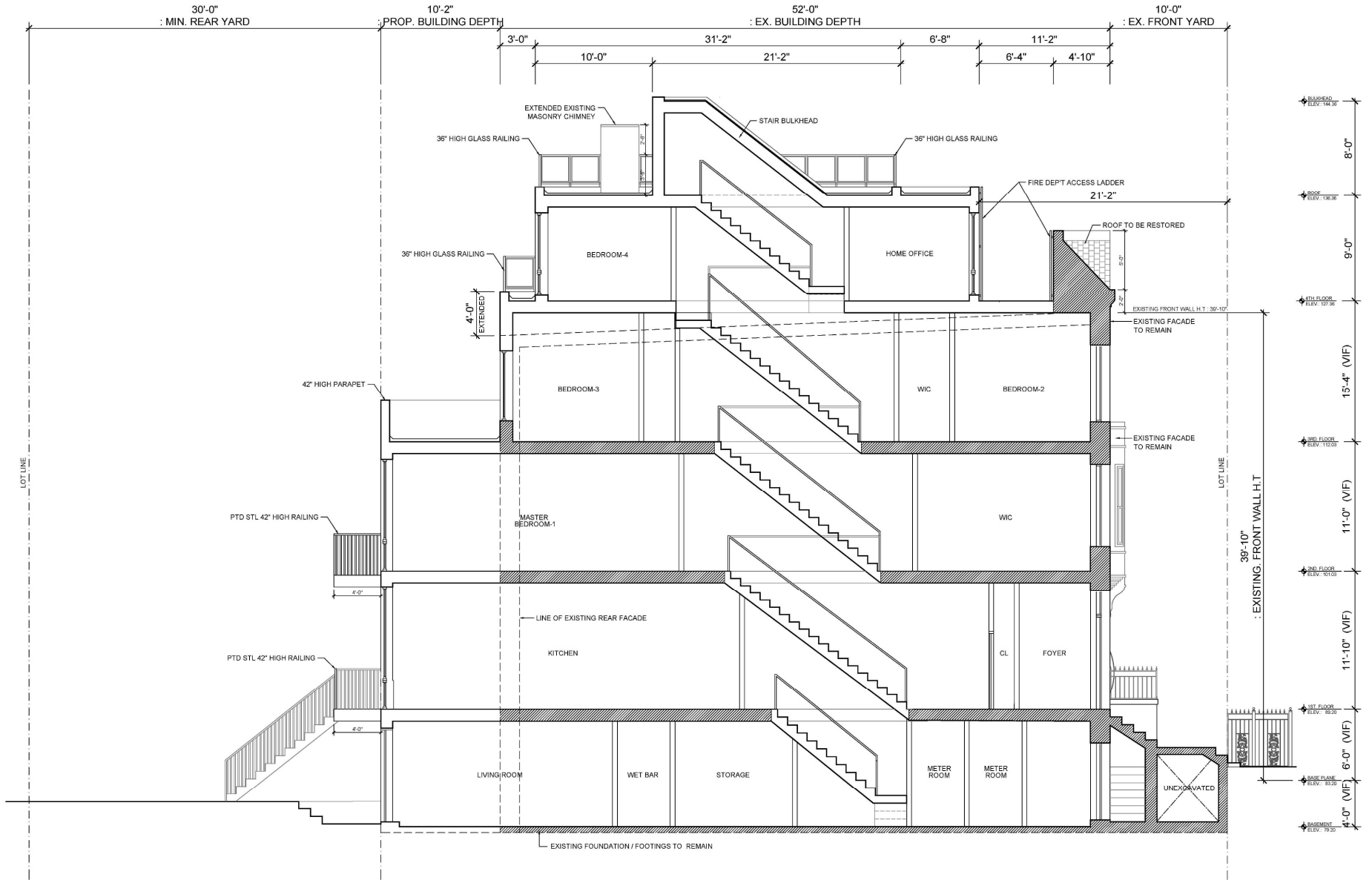


AS BUILT CONDITIONS



256 WEST 75TH STREET NEW YORK NY

SECTION



FRONT DOOR REPLACED



DOORS AT DESIGNATION

LPC 012



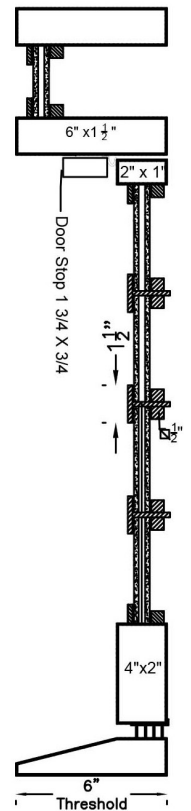
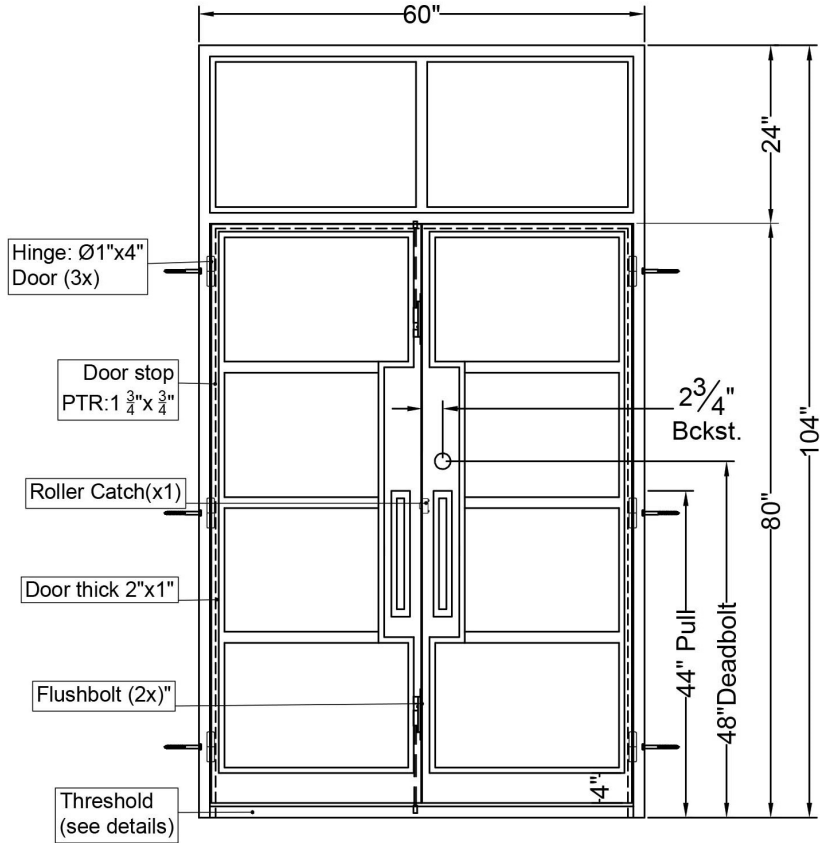
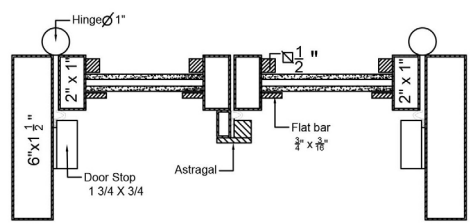
NEWLY INSTALLED DOORS

256 WEST 75TH STREET NEW YORK NY

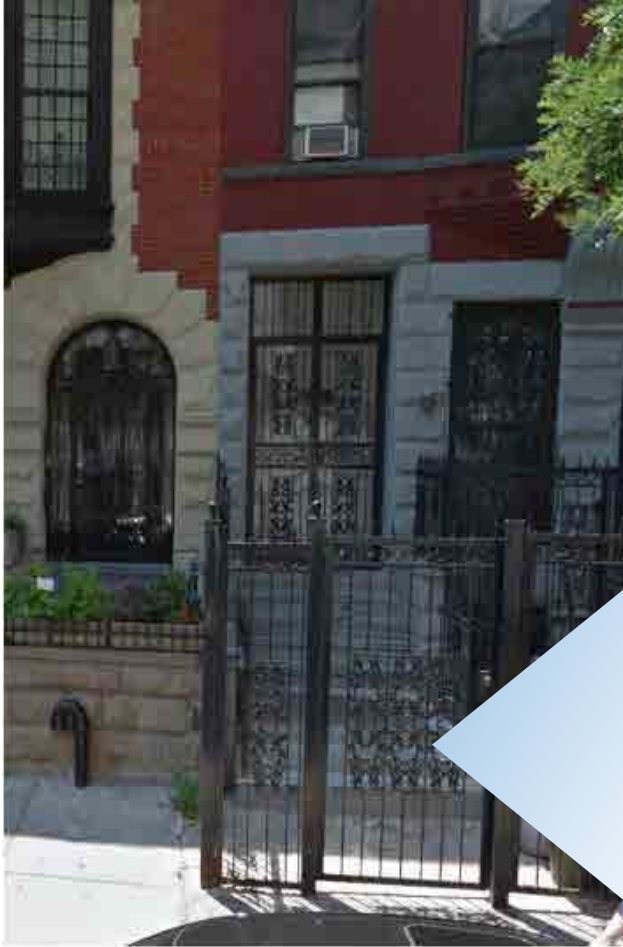
FRONT DOOR SPECIFICATION



PROPOSED FRONT DOOR



GRANITE CLAD AT THE STOOP



CONDITIONS BEFORE

LPC 014

Bianco Catala Granite Tile



AS BUILT

256 WEST 75TH STREET NEW YORK NY

